

Hidden Trails

Ph. 1-888-9-TRAILS

*Equestrian Vacations
- on & with Hidden Trails*

About Hidden Trails



Hidden Trails is owned and operated by nature enthusiasts who love horses and adventure activities. We have been involved with riding and other outdoor vacations for over 20 years.

With our partners Voyage du Cheval (France), Pegasus (Germany) as well as Equitour (Switzerland and France) we have collected the best riding destinations all over the world in some hidden places we would like to share with you.

These rides are about galloping on endless beaches, forging rivers, cantering through forests, trotting along age-old trails, gazing at beautiful vistas and encountering foreign cultures. But most of all, these trips are about getting away from the cycle of too much work and never enough free time.

Escape from the rituals, which long ago froze our nights and days into little more than routine and away from the worries of our new tense times. It is so satisfying when we take the plunge of adventure - it's unfortunate that we invent so many reasons to put aside living our dreams of adventure. It is sometimes a tangled web that we weave through life. Some of the threads reveal a work-a-day world of commitments, duties and obligations. Other threads are of a quiet fabric of hope, responsibility and refreshment.

On our adventures you see the real country, its back country and meet the locals. The love for horses has no boundaries but possesses a common language we all speak and understand. The majority of the overseas rides are from inn to inn, some from castle to castle and a few are camping rides.

You will experience new countries and their customs and make new friends. The Hidden Trails trips are the best you can find.

They have been tested by our staff or associates and received our stamp of approval. If you are considering a special riding vacation anywhere in the world, call us first and let our experienced consultants match the perfect trip with your dream.

We will listen to you and give you objective advice to help you choose the best destination and adventure.

Your vacation is the most precious time of the year and we are committed to making it the most memorable time of your life. Wherever you go, have a great time and bring back some peace of mind.

Thank you for your continued support.

Hidden Trails

Phone: 604-323-1141

Fax: 604-323-1148

Toll Free: 1-888-9-TRAILS

from within the USA or Canada or

E-mail: info@hiddentrails.com

Website: www.hiddentrails.com

Address:

659A Moberly Road, Vancouver BC Canada V5Z 4B3 or

4406 Tennyson Road, Wilmington, DE 19802 USA

Toll Free from the U.K.:

Ph: 0-808 189-0420

Fax: 0-808-280-1860

Toll Free Worldwide:

Skype: hiddentrails

Green Mountain Getaway - USA, North America

Tour Code: IRVT03
5 days / 4 nights ~\$1,500.00
Dates: May to Oct

Trip Rating: ●●●●●
Difficulty: ●●●●●
Lodging: ●●●●● Exceptional

Tack: Western and English
Horses: Thoroughbred, Appaloosa and Quarterhor...
Pace: Moderate - all paces according to ridi...
Walk, Trot, Canter,

Airport: Rutland



Introduction

Vermont, USA

A little piece of heaven; this is a special equestrian holiday getaway at this classic four season resort located in the heart of central Vermont's Green Mountain national forest. Majestically set on 700 acres with sweeping views of a mountain lake and forests, we offer an endless array of outdoor adventures, ideal for singles, couples and families - there's something for everyone. Overnights are at a country inn with numerous facilities and superb dining. The Equestrian Center comes alive in spring, summer and fall catering to the experienced horseman and the novice rider. Guests will enjoy guided trail rides on horseback with breathtaking views. The resort's private beach on the lake has kayaks, canoes, scenic pontoon boat rides and swimming. For the avid outdoors man, clay bird shooting and hiking are all on site as are tennis, croquet or strolling country roads. Many beautiful golf courses are within a short drive. The resort's breathtaking natural beauty with spectacular views of the lake and mountains creates a comfortable respite from day-to-day stress and pressure. The resort has a new outdoor heated pool and hot tub for days when the lake is a little chilly. At the moment you enter the lodge you will be welcomed by the resort's friendly staff, ready to assist with any requests you may have. You will relax as you settle in to your guest room and take in the views in all directions. Whether you're in search of a romantic hideaway, family vacation, outdoor adventure, or the perfect wedding this equestrian escape has something for everyone. You will enjoy the beautifully appointed accommodations, warm hospitality, creative cuisine, array of outdoor adventures, massage therapy, lake activities and more!

Accommodation

Accommodations

This is a stationary ride, so all nights will be spent at the same location.

Description

Majestically set on 700 acres in Vermont's lush Green Mountains with sweeping views of a pristine mountain lake and an infinite expanse of National Forest, the Green Mountain getaway offers an endless array of outdoor activities. Ideal for both couples and families, there's something for everyone. The main inn has a spacious lobby of post and beam construction, a stone fireplace and many antiques. The guest rooms are well appointed in the tradition of a mountain lodge with panoramic views. The regular package includes a Classic Lodge room. Upgrades are available to the Luxury Lodge Rooms, Luxury Cabins, or Suites. For larger groups of 4+ we can also offer multi-bedroom Chalet accommodations. As our overnight guest, you will also have access to year-round stay-inclusive activities including daily afternoon refreshments in the Main Lodge Lobby and use of our hot tub, sauna and fitness room and seasonal activities including our heated outdoor pool, tennis court, private beach, kayaks/canoes/paddle boards, cross country ski & snowshoe trail passes and ice skating rink access. Laundry is not available.

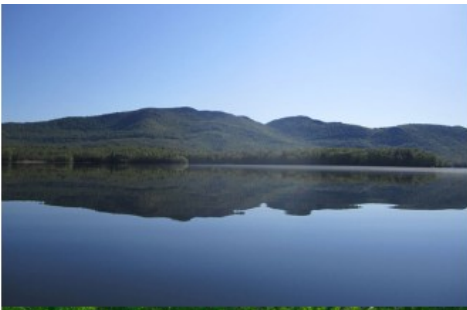
Room Options



Classic Lodge Rooms

Located in the Resort's Main Lodge building overlooking the lake and mountains or our upper meadow, the classic lodge rooms promise a wonderful view. These rooms can be found on the three separate levels of the main lodge, each with unique décor and offering a variety of bedding configurations; one queen bed, two queen beds, two full beds or one queen bed with bunk beds. Each Classic Lodge Room has a private bathroom with walk-in shower. Most have a sitting area. While we cannot guarantee a specific Classic Lodge Room based on décor, we will do our best to accommodate your bedding configuration needs.





Luxury Room - upgrade

Each of the luxury lodge rooms located in the Lodge is uniquely decorated and offers spectacular mountain and lake views. Our luxury lodge rooms offer spacious accommodations with well-appointed furniture, seating areas and en-suite bathrooms. These luxury lodge rooms offer 3 options for bedding configurations, King, Queen or Two-Queen beds. The main lodge is situated at the heart of resort property with easy access to all resort activities and guest houses.



Luxury Suite - upgrade

Luxuriously appointed and with ample space (including separate living areas & over-sized bathrooms with jacuzzi tubs) and an array of windows, it's quite possible that you won't want to leave. All luxury suites are located on the second floor and offer magnificent views.



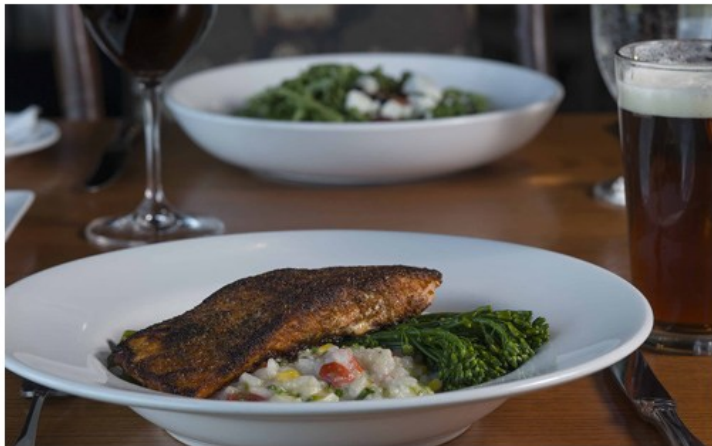
Chalets - upgrade

If you're looking for your own private retreat or have a group of friends or family who wish to stay together, our chalets offer a variety of choices. Each chalet is on a private wooded lane with a private yard, has a unique design and comes fully equipped with a variety of amenities (most have patios/balconies, many offer private hot tubs, pool tables, outdoor grills).

You can find more details about the different chalets available by [clicking here](#).

Room Occupancy

Triple occupancy is possible in some rooms/ cabins. Single supplement is mandatory for solo travelers.



Meals

Breakfasts and dinners are included in your package. One main entry per person only; appetizers, desserts, and drinks are additional cost and to be paid locally. Lunches are not included and can be taken at the Highlands Tavern.



For casual bistro fare join us in the Highlands Tavern. In our tavern you will find a more relaxed and slightly more modern setting, which offers delicious lunch and dinner menus with a full service bar and extensive wine list including many made right here in Vermont. One of the assets which makes our tavern so popular is our extensive locally crafted Vermont Brew tap selection – we always have 12 on tap to choose from! Enjoy a game of pool, seasonal outdoor seating on the Terrace and spectacular views.

We pride ourselves on artfully crafted cuisine delivered by attentive staff with unrivaled settings for dining both indoors and out! Choose from the dining room or tavern in our main lodge, or in warmer months, have a seat on our outdoor terrace. All offer phenomenal views of the mountains, lake and meadow. Recent renovations to our dining room include a new stone fireplace, floor to ceiling windows and Vermont-made Hubbardton Forge Lighting. Our Chefs have crafted unique menus, using locally sourced products whenever possible. We invite you to join us for breakfast, lunch or dinner and are certain your taste buds will be tantalized!

Meal Hours

Breakfast is in the Dining room from 7:30 am - 10:30 am.
Lunch is always 12:00 pm -2:00 pm.

For dinner the dining room opens at 5:00 pm and closes at 9:00 pm. The bar will remain open for the whole dining schedule as long as we have people; by law has to shut down at 2:00 am.
Neat casual resort attire.

Dietary Restrictions

We can cater to all dietary restrictions if given prior notice.



Facilities/ Activities (included in package)

- Pool, hot tub, and sauna
- Private beach
- Kayaking, paddle boarding, canoeing
- Disc golf
- Hiking trails
- Tennis
- Sand volleyball
- Fitness center

Facilities/ Activities (available at extra cost- please inquire)

- Gift shop
- Pontoon boating
- Fishing
- Clay bird shooting
- Spa (massages, facials, hairstyling & makeup, manicures & pedicures)
- Golf (nearby)



Riding

Green Mountain National Forest

This is a place with rolling green hills, forested mountains, blue mountain lakes, and trickling creek beds. The forest service maintains a number of trails that can be accessed by horseback riders. Some of these trails allow no motorized vehicles, maintaining the ambiance of the wilderness. These trails extend for miles into the forestland, around rolling green pastures, border mountain lakes, and cross creek beds. On some trails, you can see remnants of history. You may see an old mill-dam and lodge, or even ride on an old wagon trail.



Itinerary



Located on 700 beautiful acres, surrounded by thousands of acres of National Forest and overlooking a pristine lake, the Resort is the perfect setting for a Horseback Riding Vacation.

Enjoy the spectacular property as you walk, trot or canter through serene mountain pastures, over miles of wooded trails, by untouched lakes and ponds, through the lush, green canopy of spring, the flowering country fields of summer and the brilliant colors of autumn's foliage.

From Memorial Day (end of May / early June) to October you can enjoy daily trail rides into the breathtaking Green Mountains of Vermont. We offer daily riders in the morning and in the afternoon - usually 2 hrs (depending on the groups, the riding level and the weather). Trail rides (40 miles of trails available) are offered with English or Western saddles.

We will help you to create a personalized riding vacation to suit your needs and ability level, making it as varied and intensive as desired. In addition to the Equestrian Center, the resort's numerous facilities include tennis, swimming, boating, kayaking, canoeing, hiking, massage therapy, clay bird shooting, nearby golf ... or just simply enjoying the breathtaking vistas from a comfortable chair!



Non-riders

With 700 private acres perched at the top of a quiet mountain road, a 740 acre lake, miles of trails, expansive meadows, the Green Mountain National Forest and a full host of activities, there is no shortage of things to do, even for non-riders.

Non-riding activities available on the resort include swimming, paddleboarding, beach and lake activities (fishing and boating - extra fee might apply), clay bird shooting and hiking.

Other Info

Meeting: Chittenden

Airport: Rutland

Train station: Rutland

Transfer: Not available

Distance: 25 km / 16 miles

Transfers are not available. Please take a taxi from Rutland Airport. Call Tri-state Transportation at (802) 855-3130. Call a few days before to book and the day of to re-confirm! Check-in from 4:00pm-10:00pm.

Tack: Western and English

Horses: Thoroughbred, Appaloosa and Quarterhorse Cross, Percheron, Percheron Cross

Pace: Moderate - all paces according to riding level

Walk | Trot | Canter |

Level: 🐾🐾🐾🐾🐾 (1 to 3.5 out of 5) All riding levels

Age: Min 8

Weight: 250 lbs / 115 kg

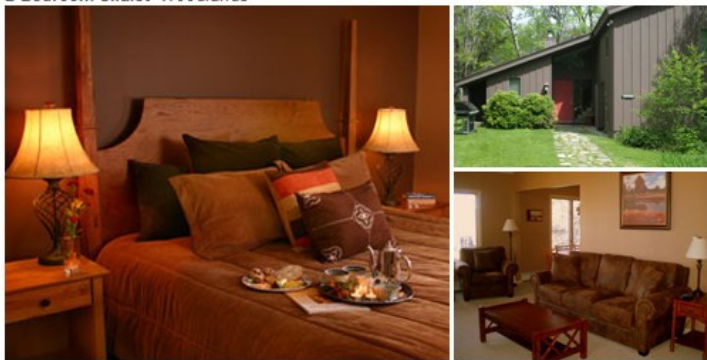
Riders: Min 1 riders

Max 8 riders

Chalet Accommodations

Samples - please inquire about more chalet options

2-Bedroom Chalet- Woodlands



2BR/2 Bath • Max Occupancy 4 • Wireless Internet • Dog Friendly

- 1200 square feet of living space on two levels featuring 2 bedrooms and 2 full bathrooms.
- Living room with brand new leather seating, a working wood burning fireplace and 42" flat screen TV with premium cable and DVD player.
- Newly renovated, fully-equipped kitchen with granite countertops, custom cabinetry, refrigerator, stove, dishwasher, microwave, and coffeemaker.
- Large dining area adjacent to kitchen and living room, with a table that seats 6.
- Upstairs master bedroom features a 4-poster California King bed.
- Downstairs bedroom is furnished with two twin beds and has an adjoining full bathroom.
- Free wireless high-speed internet throughout the unit.
- Free, unlimited landline calling anywhere in North America.
- A variety of games, including Nintendo, and books are available for family fun.
- In warmer weather, enjoy a 4 person patio set and brand new stainless steel gas grill.
- In Winter, ski-in/ski-out the front door onto 60 kilometers of cross country trails.
- Chalet is on 1+ acre of surrounding wilderness and borders the jumping ring and pond.

3-Bedroom Chalet - White Birches



3BR/4BTH • Max Occupancy 6 • Wireless Internet • Non-Smoking

Enjoy this spectacular spacious, open-plan, single level home; furnished with antiques and fine furniture. You'll be just a short walk to all activities and to the Main Lodge.

- Incomparable panoramic views of the lake and Green Mountain National Forest. Very private setting. Cable television throughout the home.
- Spacious living room with cathedral ceiling, wood-burning fireplace, towering glass windows and view of the lake.
- Dining/Bar area for entertaining, with views for your guests to enjoy.
- Large brick terrace with deck furniture the perfect place to spend the lovely days & evenings of Summer.
- Fully equipped gourmet kitchen with beautiful granite throughout, island seating, new appliances and lake/mountain views.
- Cozy family room with wood-burning fireplace, and 40" flat screen television.
- Three Spacious Bedrooms:
 - Master bedroom has cherry four poster king bed with windows framing the lake and mountains, flat screen television and DVD/CD players.
 - Master bath has whirlpool tub, double granite vanity sinks, separate shower with steam option.
 - Second Queen Bedroom has en suite full bath with whirlpool, separate shower and granite vanity sink
 - Third Bedroom has 2 twin beds, en suite bath with whirl pool, separate shower and granite vanity sink.
- NO SMOKING, NO PETS please!

4-Bedroom Deluxe Chalet - The Jewel at Meadows Edge



4 BR/ 4.5 Bath • Max Occupancy 12 • Wireless Internet

"The Jewel" features the best of a classic mountain lodge: soaring spaces, fascinating design elements and understated elegance all blending seamlessly in its idyllic environment - complete with spectacular Green Mountain vistas.

- 4,400 square feet of living space on two levels featuring 4 guest bedrooms and 4.5 baths - plus 1,700 square ft of wraparound deck and lower level walk out bluestone terrace
- High, vaulted wood ceilings with Douglas Fir trusses create an open, airy feeling
- An expansive wall of windows provides incredible views of the mountains, meadow, lake and surrounding National Forest
- A massive two hearth stone fireplace anchors the building and is a focal point of the lodge's great room
- A classic Mission style dining room for 12 with fireplace (ideal for small conferences, board meetings and corporate retreats)
- Handcrafted cabinetry throughout with old growth cherry hardwood flooring and radiant heat
- Amazing full-service kitchen with Sub-Zero refrigeration and Dacor cooking island finished with honed granite countertops and slate tile flooring.
- Bar servicing both great room and dining room complete with wine storage
- State-of-the-art widescreen HDTV television in fire-placed family room
- Game Room with billiards table and hospitality bar

(NOTE: Chalet fireplaces are available during winter months only)

Rates and Dates 2026 - IRVT03

Rates include: Accommodation in classic room, Breakfasts and Dinners (1 entree per person per night only) at the Highlands Dining Room, 7 riding units (each unit being a 1 or 2-hr trail ride depending on time), Taxes and Hotel Gratuities.

Riding helmet can be provided

Non-Riding Activities: Kayaking, Paddleboarding, Canoeing, Disc Golf, Hiking, Tennis, Beach Volley & Fitness Center

Packages and Options

Season	Description	~US\$
A 2026	4 nights, 7 riding units	\$1500

Transfer Option

Description

2026	Transfer from Rutland Airport by taxi (not included)	
2026	Upgrade to Luxury Room pp (dbl) - 4 nights	\$300
2026	Upgrade to Luxury Suite pp (dbl) - 4 nights	\$450
2026	Lodging in 2 Bdr Chalet (min of 4) pp	
2026	Lodging in 3 Bdr Chalet (min of 6) pp	
2026	Lodging in 4 Bdr Deluxe Chalet (min of 8) pp	\$335
2026	Extra nights MAP pp (dbl)	\$200
2026	Single supplement	\$225
2026	Non rider (in room with rider)	\$450
2026	Extra day with meals and 1 trail ride pp (dbl)	\$280
2026	2 day/ 2 night option with 3 riding units pp (dbl) - Weekdays	\$560
2026	2 day/ 2 night option with 3 riding units pp (dbl) - Weekends	\$625

Tour Dates

Season	Tour Dates		
A 2026	05/17/2026 - 05/21/2026	5d / 4n	4 nights, 7 riding units
A 2026	05/18/2026 - 05/22/2026	5d / 4n	4 nights, 7 riding units
A 2026	05/24/2026 - 05/28/2026	5d / 4n	4 nights, 7 riding units
A 2026	05/25/2026 - 05/29/2026	5d / 4n	4 nights, 7 riding units
A 2026	05/31/2026 - 06/04/2026	5d / 4n	4 nights, 7 riding units
A 2026	06/01/2026 - 06/05/2026	5d / 4n	4 nights, 7 riding units
A 2026	06/07/2026 - 06/11/2026	5d / 4n	4 nights, 7 riding units
A 2026	06/08/2026 - 06/12/2026	5d / 4n	4 nights, 7 riding units
A 2026	06/14/2026 - 06/18/2026	5d / 4n	4 nights, 7 riding units
A 2026	06/15/2026 - 06/19/2026	5d / 4n	4 nights, 7 riding units
A 2026	06/21/2026 - 06/25/2026	5d / 4n	4 nights, 7 riding units
A 2026	06/22/2026 - 06/26/2026	5d / 4n	4 nights, 7 riding units
A 2026	06/28/2026 - 07/02/2026	5d / 4n	4 nights, 7 riding units
A 2026	06/29/2026 - 07/03/2026	5d / 4n	4 nights, 7 riding units
A 2026	07/05/2026 - 07/09/2026	5d / 4n	4 nights, 7 riding units
A 2026	07/06/2026 - 07/10/2026	5d / 4n	4 nights, 7 riding units
A 2026	07/12/2026 - 07/16/2026	5d / 4n	4 nights, 7 riding units
A 2026	07/13/2026 - 07/17/2026	5d / 4n	4 nights, 7 riding units
A 2026	07/19/2026 - 07/23/2026	5d / 4n	4 nights, 7 riding units
A 2026	07/20/2026 - 07/24/2026	5d / 4n	4 nights, 7 riding units
A 2026	07/26/2026 - 07/30/2026	5d / 4n	4 nights, 7 riding units
A 2026	07/27/2026 - 07/31/2026	5d / 4n	4 nights, 7 riding units
A 2026	08/02/2026 - 08/06/2026	5d / 4n	4 nights, 7 riding units
A 2026	08/03/2026 - 08/07/2026	5d / 4n	4 nights, 7 riding units
A 2026	08/09/2026 - 08/13/2026	5d / 4n	4 nights, 7 riding units
A 2026	08/10/2026 - 08/14/2026	5d / 4n	4 nights, 7 riding units
A 2026	08/16/2026 - 08/20/2026	5d / 4n	4 nights, 7 riding units
A 2026	08/17/2026 - 08/21/2026	5d / 4n	4 nights, 7 riding units
A 2026	08/23/2026 - 08/27/2026	5d / 4n	4 nights, 7 riding units
A 2026	08/24/2026 - 08/28/2026	5d / 4n	4 nights, 7 riding units
A 2026	08/30/2026 - 09/03/2026	5d / 4n	4 nights, 7 riding units
A 2026	08/31/2026 - 09/04/2026	5d / 4n	4 nights, 7 riding units
A 2026	09/06/2026 - 09/10/2026	5d / 4n	4 nights, 7 riding units
A 2026	09/07/2026 - 09/11/2026	5d / 4n	4 nights, 7 riding units
A 2026	09/13/2026 - 09/17/2026	5d / 4n	4 nights, 7 riding units
A 2026	09/14/2026 - 09/18/2026	5d / 4n	4 nights, 7 riding units
A 2026	09/20/2026 - 09/24/2026	5d / 4n	4 nights, 7 riding units
A 2026	09/21/2026 - 09/25/2026	5d / 4n	4 nights, 7 riding units
A 2026	09/27/2026 - 10/01/2026	5d / 4n	4 nights, 7 riding units
A 2026	09/28/2026 - 10/02/2026	5d / 4n	4 nights, 7 riding units
A 2026	10/04/2026 - 10/08/2026	5d / 4n	4 nights, 7 riding units
A 2026	10/05/2026 - 10/09/2026	5d / 4n	4 nights, 7 riding units
A 2026	10/11/2026 - 10/15/2026	5d / 4n	4 nights, 7 riding units
A 2026	10/12/2026 - 10/16/2026	5d / 4n	4 nights, 7 riding units
A 2026	10/18/2026 - 10/22/2026	5d / 4n	4 nights, 7 riding units
A 2026	10/19/2026 - 10/23/2026	5d / 4n	4 nights, 7 riding units
A 2026	10/25/2026 - 10/29/2026	5d / 4n	4 nights, 7 riding units
A 2026	10/26/2026 - 10/30/2026	5d / 4n	4 nights, 7 riding units

Min/Max: 1/8

Best to reserve SU-TH or MO-FR.

Please inquire for custom tour dates.

Rates do not include: Lunches, Alcoholic beverages, Transfers & Gratuities for riding guides

Non-Riding Activities: Pontoon Boating, Fishing, Clay Bird Shooting, Spa & Golf

Reservation Form

Tour : _____ **Code #:** _____ **from:** _____ **to :** _____

The Travelers (Last Name, First Name)	Male Female	Single room / or tent	Birth Date MM/DD/YY	Height	Weight	Special diets												
						Special diets	Beginner	Novice	Intermediate	Strong Intern.	Advanced	ride English	ride Western	mostly arena	mostly hacking			
1. _____	<input type="checkbox"/>	<input type="checkbox"/>	_____	_____	_____	<input type="checkbox"/>	<input type="checkbox"/>	<input type="checkbox"/>	<input type="checkbox"/>	<input type="checkbox"/>	<input type="checkbox"/>	<input type="checkbox"/>	<input type="checkbox"/>	<input type="checkbox"/>	<input type="checkbox"/>	<input type="checkbox"/>	<input type="checkbox"/>	<input type="checkbox"/>
2. _____	<input type="checkbox"/>	<input type="checkbox"/>	_____	_____	_____	<input type="checkbox"/>	<input type="checkbox"/>	<input type="checkbox"/>	<input type="checkbox"/>	<input type="checkbox"/>	<input type="checkbox"/>	<input type="checkbox"/>	<input type="checkbox"/>	<input type="checkbox"/>	<input type="checkbox"/>	<input type="checkbox"/>	<input type="checkbox"/>	<input type="checkbox"/>
3. _____	<input type="checkbox"/>	<input type="checkbox"/>	_____	_____	_____	<input type="checkbox"/>	<input type="checkbox"/>	<input type="checkbox"/>	<input type="checkbox"/>	<input type="checkbox"/>	<input type="checkbox"/>	<input type="checkbox"/>	<input type="checkbox"/>	<input type="checkbox"/>	<input type="checkbox"/>	<input type="checkbox"/>	<input type="checkbox"/>	<input type="checkbox"/>
4. _____	<input type="checkbox"/>	<input type="checkbox"/>	_____	_____	_____	<input type="checkbox"/>	<input type="checkbox"/>	<input type="checkbox"/>	<input type="checkbox"/>	<input type="checkbox"/>	<input type="checkbox"/>	<input type="checkbox"/>	<input type="checkbox"/>	<input type="checkbox"/>	<input type="checkbox"/>	<input type="checkbox"/>	<input type="checkbox"/>	<input type="checkbox"/>

Special Diets: _____

Your fitness level: Excellent Moderate Poor How long have you been riding? _____

How often do you ride? _____ Have you been on other riding tours? No Yes last trip when? _____

If Hidden Trails offers a transfer from the local airport/station: I would like the transfer to be included: YES NO

In an emergency, name and phone number of contact: _____

Attention: Please, if there is more than one participant, all have to sign the reservation form - make copies if needed

With my signature I confirm my reservation of the listed program(s) under the Hidden Trails Booking Conditions. I'm aware, and I made all participants aware of the risk involved with these outdoor adventure activities. All participants have read and agree with the Hidden Trails Booking Conditions and the Hidden Trails Recreational Activity Release and Indemnity Agreement in this brochure or as listed on the Internet.

I (we) will sign and forward the Recreational Activity Release and Indemnity Agreement at least 10 weeks before trip starting date.

Last Name and First Name (The Traveler) _____

Street _____ e-mail _____

City _____ State _____ Postal/Zip Code _____

Phone (wk) _____ (hm) _____ Cell _____ Fax _____

Date _____ Signature (mandatory) 1. _____

Please, charge a 25% deposit (minimum \$ 350 per person) now and full payment 10 weeks before the travel date to my credit card.

For payments by VISA or Mastercard (no debit cards)

Cardholder: _____

Card # _____ 3 digit Security # _____

Exp.Date: _____ Signature _____

Billing Address for Credit Card (if different than mailing address):

I have enclosed a check for the deposit

Additional Signatures:

2. _____
3. _____
4. _____

Travel Cancellation Insurance Credit Card required

Sign me (us) up initial _____

No, we will provide our own initial _____

Hidden Trails

659A Moberly Road
Vancouver, BC
Canada V5Z 4B2

Toll Free: 1-888-9 TRAILS
(1-888-987-2457)

Phone: 604-323-1141
FAX: 604-323-1148



From the U.K.:

Phone 020-323-96201
Fax 0203-004-1200

Skype hiddentrails

E-mail info@hiddentrails.com
Website www.hiddentrails.com

Office hours:
Mo-Fr 8:30 am to 6 pm
Pacific Standard Time

