

Hidden Trails

Ph. 1-888-9-TRAILS

*Equestrian Vacations
- on & with Hidden Trails*

About Hidden Trails



Hidden Trails is owned and operated by nature enthusiasts who love horses and adventure activities. We have been involved with riding and other outdoor vacations for over 20 years.

With our partners Voyage du Cheval (France), Pegasus (Germany) as well as Equitour (Switzerland and France) we have collected the best riding destinations all over the world in some hidden places we would like to share with you.

These rides are about galloping on endless beaches, forging rivers, cantering through forests, trotting along age-old trails, gazing at beautiful vistas and encountering foreign cultures. But most of all, these trips are about getting away from the cycle of too much work and never enough free time.

Escape from the rituals, which long ago froze our nights and days into little more than routine and away from the worries of our new tense times. It is so satisfying when we take the plunge of adventure - it's unfortunate that we invent so many reasons to put aside living our dreams of adventure. It is sometimes a tangled web that we weave through life. Some of the threads reveal a work-a-day world of commitments, duties and obligations. Other threads are of a quiet fabric of hope, responsibility and refreshment.

On our adventures you see the real country, its back country and meet the locals. The love for horses has no boundaries but possesses a common language we all speak and understand. The majority of the overseas rides are from inn to inn, some from castle to castle and a few are camping rides.

You will experience new countries and their customs and make new friends. The Hidden Trails trips are the best you can find.

They have been tested by our staff or associates and received our stamp of approval. If you are considering a special riding vacation anywhere in the world, call us first and let our experienced consultants match the perfect trip with your dream.

We will listen to you and give you objective advice to help you choose the best destination and adventure.

Your vacation is the most precious time of the year and we are committed to making it the most memorable time of your life. Wherever you go, have a great time and bring back some peace of mind.

Thank you for your continued support.

Hidden Trails

Phone: 604-323-1141

Fax: 604-323-1148

Toll Free: 1-888-9-TRAILS

from within the USA or Canada or

E-mail: info@hiddentrails.com

Website: www.hiddentrails.com

Address:

659A Moberly Road, Vancouver BC Canada V5Z 4B3 or

4406 Tennyson Road, Wilmington, DE 19802 USA

Toll Free from the U.K.:

Ph: 0-808 189-0420

Fax: 0-808-280-1860

Toll Free Worldwide:

Skype: hiddentrails

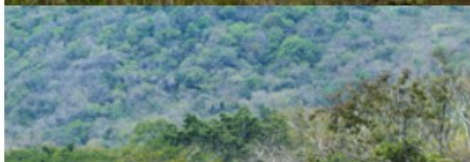
Mayan Jungle Ride with Caracol excursion - Belize, Central America

Tour Code: IT-BESR02
8 days / 7 nights ~\$3,415.00
Dates: Jan-Aug & Dec

Trip Rating : ●●●●●
Difficulty : 🐾🐾🐾🐾
Lodging : 🏠🏠

Tack: Western Wintec
Horses: Spanish quarterhorse local breed mix
Pace: 5 - 6 hours some canters!
Walk, Trot, Canter,

Airport: Philip S. W. Goldson International Airport in Belize (BZE)



Introduction

Interior, Belize

Enjoy an amazing adventure vacation in the jungles of western Belize.

During your stay, you will have the opportunity to ride to hidden caves, remote waterfalls & more. This trip is an excellent blend between cultural activities, adventure and nature immersion.

You will have the opportunity to see many birds and possibly other wildlife such as Howler Monkeys, Jaguars, Puma, Ocelot, Tapir and more. You will also discover Mayan ruins and remote villages. The avid swimmers, will be fully satisfied with many occasions to cool off in beautiful and remote water holes.

Your evenings are spent in an award-winning ecological lodge surrounded by the Jungle. You will remember this enchanting place forever!

Accommodations consist in tastefully decorated rooms with a comfortable bed and ensuite facilities. The sounds of nature will ease you to sleep every night.

One of the highlight of your trip will be the visit to the beautiful Maya archeological site of Caracol!

Accommodation



Accommodations

This is a stationary ride, so all nights are spent at the same location.

Description

You are accommodated in an award-winning environmentally sustainable lodge, located on 105 of Nature Reserve surrounded by the jungle.

The owners wanted to create an eco-friendly lodge and therefore the lodge produces its own electricity thanks to solar panels. For this reason, the standard electric outlets have been replaced by USD outlets. This means that hairdryers and curling irons cannot be used. We do have, however, a room where guests can charge their computers or other electronics through standard outlets.

Each of the 10 spacious cabanas are elevated and designed to naturally stay cool, taking advantage of natural ventilation and convection, as well as cooling river breezes. To supplement our 'natural breeze' cooling system we have industrial ceiling fans in all cabanas.

It should also be noted that our running water is supplied by rain water and water from the nearby river.

Complimentary WiFi is available free of charge in guest common areas.

The Internet is made possible by multiple towers beaming the signal to us from town. This connection can be affected by rainy and windy weather, as well as by local anomalies such as power outage in town or the number of people using the system at the same time, so it may be slower or unavailable from time to time.

Please, note that there is little to no cell service available at the lodge.

International Phone Service is available for an additional fee.

Laundry service is available at BZ\$20 per load (wash, dry, and fold), and is sent out to our laundry facility in Cristo Rey Village each day.

Room Options

- Garden View Cabanas (1 Queen bed) - can accommodate up to 2 people
- River Valley View Cabanas (1 King bed + 1 futon) - can accommodate up to 3 people
- Jungle View Cabanas (1 Queen or King bed + 1 futon + enough room for a 2' x 6' camp cot & a 4" foam mattress) - can accommodate up to 5 people (ideally, 2 adults and up to 3 children)
- Rainforest Cabin (1 large bedroom with a king bed + 1 small bedroom with bunk beds) - can accommodate up to 5 people



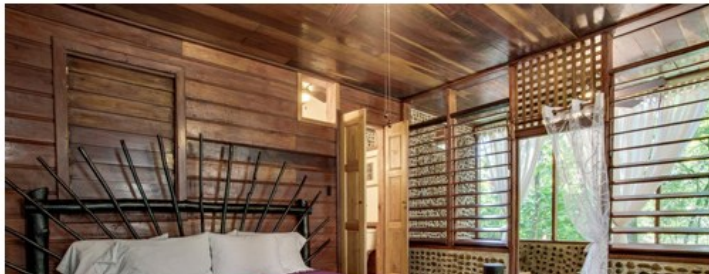
Garden View Cabanas ("Aracari" & "Kiskadee" Rooms) - can accommodate up to 2 people
 The 2 adjoining Garden View Cabañas share a single building and palm-thatched veranda overlooking the tropical flower garden. They are within easy walking distance of the dining room and bar. These rooms each have 1 Queen sized handcrafted four-poster bed made from indigenous My Lady trees, tiled floors, private hot water bath with a large river stone-lined shower and an industrial ceiling fan.

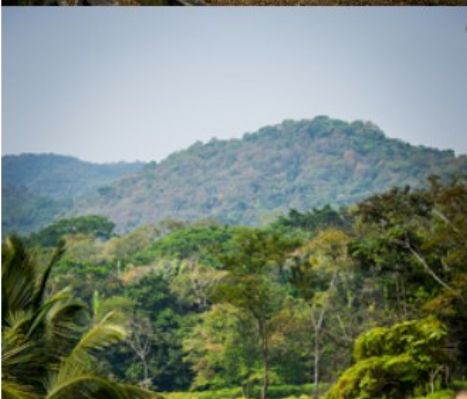


Jungle View Cabanas ("MotMot", "Oropendola", & "Great Currasow" Rooms) - can accommodate up to 5 people (ideally, 2 adults and up to 3 children)
 Larger and more private than the Garden View Cabañas, the Jungle View Cabañas are spacious, stand-alone rooms offering either a queen-sized or king-sized handcrafted four poster bed, full sized futon, private thatched roof veranda, and gorgeous views of the surrounding jungle. These rooms all have tiled floors, private hot water river stone-lined showers, 2 industrial ceiling fans and a hammock.



River Valley View Cabana ("Laughing Falcon," "Little Blue Heron," "Purple Gallinule", & "Kingfisher" Rooms) - can accommodate up to 3 people
 Our most secluded and spacious rooms, these cabañas are prized for their stunning views of the Macal River Valley. Each room is equipped with industrial ceiling fans and private hot water baths with large river stone-lined showers. They feature a large, palm-thatched veranda, a king-sized four poster bed, 1 full-sized futon, and hardwood floors.





Rainforest Cabin - can accommodate up to 5 people

Formerly the abode of the owners, this 2-bedroom/one-bath cabin features a covered veranda, multiple ceiling fans, and mixture of hardwood and ceramic tile flooring. The master bedroom contains a king-sized bed and panoramic views of the surrounding jungle. The smaller second bedroom is perfect for the kids, with one set of bunk beds. The bedrooms are linked by a half-bath, and there is a second sink basin and separate stone-lined shower room to help as everyone is trying to get ready at the same time.

Room Occupancy

Please, let us know what is your preferred room type at the time of booking. Also, note that we do not take solo travelers at this time.

Children under 18 years of age can stay in the parents' room free of charge (including the addition of one camp cot). If additional beds are needed to accommodate children of any age, then an additional fee applies. Cots and additional bedding arrangements must be requested in advance.



Meals

All meals are included from dinner on Day 1 to breakfast on your last day. Breakfasts and Dinners will be taken at the lodge, while lunches will be provided by the ranch during day rides. Please, note that desserts and drinks are not included in your package.

At the lodge, the chefs combine the freshest local products and their skill to serve guests with delicious dishes. The majority of fruit, herbs and vegetables come from our working farm, and our eggs are delivered by our free-range chickens. We use local fishermen and fish farms to provide fresh fish and seafood, and we purchase all meats locally. Whenever available, ingredients used in our gourmet dishes are produced within Belize. The lodge's farm is currently cultivating Valencia oranges, Key and Tahitian (Persian) limes, several varieties of mango, and coconuts. Additionally, we produce our own avocados, chaya (a local green favored by the Maya), star fruit, sapodilla, grapefruit, craboo, breadfruit, and soursop (guanábana). During different times of the year we also grow a small selection of vegetables and fresh herbs. All of the flowers and plants you see at the lodge are grown on the farm in our very own landscape and flower nursery. We encourage guests to walk around the farm via the main road and to help themselves to any of our tropical fruits. Our only rule is that you must eat what you pick!

Early Breakfast: Packed breakfasts are available for departures prior to 6:45 AM and when ordered at least one day in advance.

Full and Continental Breakfast: Served between 6:30-9:30 AM. Menu changes daily & offers a choice of 4 items.

Snacks & Homemade Desserts: Served all day.

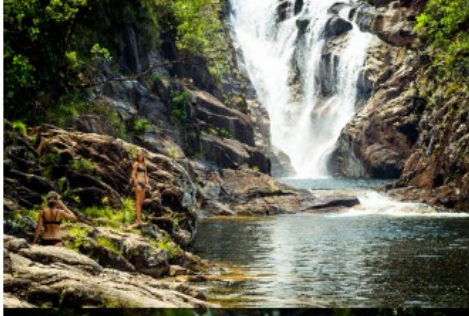
Dinner: Served between 5:30-8:30 PM. Menu changes daily and offers a choice of two starters and two entrées with special selections for specific dietary needs. Private candlelight dinners are also available for a small fee and with advanced notice.

During full day rides, you will be provided with a packed lunch. In case of half-day rides, lunch will be cooked at the ranch's Cantina.

Dietary Restrictions

We can accommodate most dietary restrictions if notified prior to arrival.





Riding



Riding Experience

Riders must be comfortable at a walk, trot, and canter. It is important that riders are capable of strenuous uphill hikes in order to reach the waterfall and caves.

Pace

The ride will move slowly up and down any steep, rocky paths and will increase in speed to include canters and maybe gallops once a plateau is reached. Our half day and full day rides include breaks for swimming, caving, and picnic lunches.

Terrain

We select only the most interesting routes, passing through varied ecosystems, which our knowledgeable guides carefully explain. We will identify traditional uses of plants, visit Maya ruins, and of course enjoy the exhilarating experience of riding through a pristine environment.

Horses

We started a breeding program about 10 years ago for American Quarter Horses crossed with regional stock. We currently have 25 horses leaving on a 150 acre ranch. Being well-trained and cared for, the horses have a gentle disposition, are sure-footed, and are conditioned for stamina and endurance. We take care to match the rider with the most suitable horse.

Equipment

It is important that riders wear riding boots, hiking boots, or tennis shoes (with socks), and long (preferably single-seamed) trousers or jodhpurs.

Insurance

Please make sure you are covered by travel and medical insurance for unforeseen situations.

Itinerary



Sample Itinerary - subject to changes

Day 1 (Saturday): Arrival

If you arrive by International flight, you will be met outside the arrival zone at the Airport by a driver who will be holding a sign with your name on it. Alternative pickup locations can be arranged and rates may vary. A stop at the Belize Zoo can be added to your arrival or departure transfer depending on arrival time (Zoo closes at 3:30 pm) for an extra fee.

Depending on arrival time, you may enjoy some of the lodge activities such as: a refreshing swim in the pool, a hike on the trails, river tubing, canoeing and more. Or relax and decompress to the sounds, smells and views of the jungle river valley from your own private hammock. Enjoy your first dinner & cocktails in the open-air fine dining restaurant. Alternatively, an intimate private deck dinner service can be arranged for an extra fee (to be paid at the lodge).

Meals included: Dinner

Overnight at the Lodge

Day 2 (Sunday): Ride to an ancient Mayan cave

Breakfast is served starting at 6:30 AM. At 8:00 AM, a driver will transfer you to the ranch. Please be ready in your riding cloth. We will provide water, lunch, a small saddle bag, a beach towel and poncho. You will receive an oral orientation before being introduced to your horse and embarking on a full day of horseback riding. Today's ride is through the rainforest to an ancient Mayan cave. You will explore and discover interesting formations and evidence of the Mayan culture in pottery remnants and potsherds that are hundreds of years old. After the cave,



refresh yourself with a cool dip in the crystal clear waters of Butterfly Falls and feast on a gourmet picnic lunch. Return to the ranch between 3:00 and 4:00 PM. After a refreshing beverage, you will be driven back to the Lodge, a 30-minute drive. Return to your Cabana to freshen up for dinner and lively conversation with your hosts and other guests.

Meals included: Breakfast, Lunch & Dinner
Overnight at the Lodge

Day 3 (Monday): Barton Creek

Morning routine repeats. You take a tour of the ranch on horseback, learning about our off-grid system and visiting the ponds where you might see birds and wildlife.

After lunch in the Cantina, we will drive to Nohoch Sayab River cave at Barton Creek. As you make your way down the steep narrow road to the valley floor, you will be astounded by the size of fruit trees and tropical flora in the fertile Barton Creek valley. Arriving at Mike's Place, you will enter a canoe and paddle across the creek, then suddenly disappear, paddling deep into the sparking stalactite formation river cave. When you return to the mouth of the cave, enjoy a swim if you wish. Then back to the lodge for another unique meal and relaxation time.

Meals included: Breakfast, Lunch & Dinner
Overnight at the Lodge

Day 4 (Tuesday): Half-day Jungle Ride & Visit

This day begins with a beautiful half-day jungle horseback ride followed by lunch at the ranch's cantina. The destination for the half-day ride is a secluded hidden valley where you will ride along a winding creek and enjoy the exotic tropical vegetation and excellent opportunities for sighting colorful rainforest birds and iridescent butterflies. During the ride, there are excellent opportunities for seeing birds and possibly wildlife as the valley is home to Howler Monkeys, Jaguars, Puma, Ocelot, Tapir and more. There are opportunities to canter in some places.

After lunch, your guide will accompany you on a tour of Cahal Pech followed by shopping or optional cultural tours in San Ignacio or simply experiencing the ambience of the lovely town of San Ignacio at the confluence of the Mopan and Macal Rivers where they merge into the Belize River. You will return to the lodge for dinner and a relaxing evening.

Riding time: approx. 2.5 hours
Meals included: Breakfast, Lunch & Dinner
Overnight at the Lodge

Day 5 (Wednesday): Visit of Caracol (no riding - min 2 pax)

Today, you will visit Caracol (Spanish for "snail"), located about 2 hours' drive away from the Lodge. Caracol is the most spectacular Mayan site in Belize, as well as one of the most impressive in Central America. Once home to as many as 200,000 people—more than half of the entire modern-day Belizean population, Caracol was a metropolis with five plazas and thirty-two large structures covering almost one square mile including Belize's tallest manmade structure, the temple of Ca'ana. Altogether there are some 35,000 buildings at the site, though only a handful have been fully excavated. Your day will end off with a leisurely stop at either Rio On Pools or Big Rock Falls for more breathtaking scenery and a swim. Be sure to have your camera batteries fully charged and a fresh memory card available, as not only the grand Mayan architecture but the surrounding jungle and wildlife will keep you snapping photos all day long.

Meals included: Breakfast, Lunch & Dinner
Overnight at the Lodge

Adventure Level: Moderately strenuous. An amazing, but very bumpy 2-hour drive on unpaved road takes you through the Mountain Pine Ridge Reserve, Eljio Panti National Park, and the lush broadleaf rainforest of the Chiquibul National Park. Choose to climb to the tops of the temples to add an even greater adventure level.

What to Wear: Shorts or lightweight long pants, shirt, and comfortable walking shoes. Bring along your bathing suit to change into for swimming after touring the ruins. A hat, sunglasses, sunscreen, and insect repellent are recommended, as well.

Restrictions: This tour is not for those who suffer from car-sickness. Rio On Pools is the recommended choice for those with more limited mobility and for children under 5 years of age.

Day 6 (Thursday): Ride to Falls

Today is a full day of riding to gorgeous waterfalls. The trail winds through varied ecosystems and terrain while your guide points out features and explains traditional uses of rainforest plants.

Enjoy a homemade picnic lunch and swimming at the waterfalls, relax awhile and then mount the horses for a rejuvenating ride home.

Riding time: approx. 4-5 hours
Meals included: Breakfast, Lunch & Dinner
Overnight at the Lodge

Day 7 (Friday): Ride through Slate Creek Preserve

Your last day of riding will be another jungle ride, an immersion into the rainforest and a visit to a lovely hidden valley filled with giant fruit trees. This is the heart of Slate Creek Preserve, the creek of the same name meanders through this incredibly rich and beautiful valley surrounded by forested hills. Your guides will continue to show you traditional uses of the plants and trees you are passing. You will return to the ranch's cantina for lunch and say goodbyes to your guides and other staff. Travel back to the Lodge for a free afternoon.

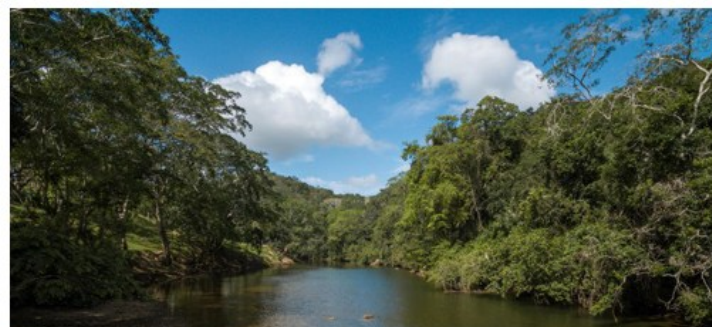
Meals included: Breakfast, Lunch & Dinner
Overnight at the Lodge

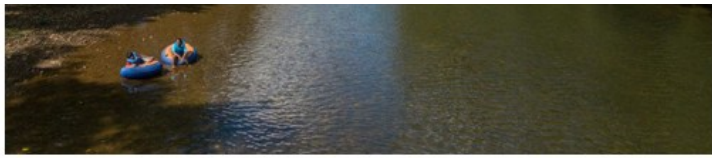
Day 8 (Saturday): Departure

The time of departure will depend on your plans or flight times. Transfer from the Lodge to International Airport or Belize City by vehicle is included. Contact us for rates to other desired destinations. There is a local airport, Maya Flats, outside San Ignacio if you want to fly to the islands or other destinations offered by Tropic Air and Maya Island Air.

Meals included: Breakfast

Note: The order of the rides in this package can be changed at the operator's discretion. We will do our best to offer all activities but there will be no refund for services we are unable to perform due to circumstances out of our control, such as weather or other abnormal events.





Self-guided on-site activities (included in your package):

- o Upstream Canoeing
- o Lazy River Tubing
- o Hiking
- o Birding
- o Farm Animal Feeding
- o Swimming in the Macal River and Jungle Infinity Pool

Activities & Services offered for an extra fee:

- Babysitting
- Half-day canoe trips to San Ignacio with a naturalist guide
- In-Room Massage

Other Info

Meeting: Belize City

Airport: Philip S. W. Goldson International Airport in Belize (BZE)

Transfer: Belize City

Distance: 64 miles 2 1/2 hours

Pick-up/ drop-off is included from Philip S. W. Goldson International Airport in Belize (BZE).

Transfers can be arranged at any time of the day.

Tack: Western Wintec

Horses: Spanish quarterhorse local breed mix

Pace: 5 - 6 hours some canters !

Walk | Trot | Canter |

Level: 🐾🐾🐾🐾🐾 (2.5 out of 5) Low Intermediate+

Weight: 200 lbs / 90 kg

Riders: Min 4 riders Max 12 riders Max Capacity 25
(per riding group)

Rates and Dates 2026 - IT-BESR02

Rates include: Accommodations in Garden View type rooms, All meals (no dessert), Transfers, 5 riding days, Excursion to Caracol, Entrance fees, GST & Room Tax
Non Riding Activities: Canoeing, Tubing, Hiking & Bird watching.

Packages and Options

Season	Description	~US\$
A 2026	8 day Lodge Ride and Tour (High)	\$3415
B 2026	8 day Lodge Ride and Tour (Mid)	\$2950
C 2026	8 day Lodge Ride and Tour (Low)	\$2655

Gratuity: 10 %

Rates Note: Possible upgrade to other room categories at extra cost - please inquire

Transfer Option

Description

2026	Transfer from/to Belize City included (min 2 pax)
2026	Discount for triple or quad occupancy -- please inquire

Tour Dates

Season	Tour Dates		
A 2026	04/01/2026 - 04/08/2026	8d / 7n	8 day Lodge Ride and Tour (High)
B 2026	04/08/2026 - 04/15/2026	8d / 7n	8 day Lodge Ride and Tour (Mid)
C 2026	07/01/2026 - 07/08/2026	8d / 7n	8 day Lodge Ride and Tour (Low)
B 2026	11/01/2026 - 11/08/2026	8d / 7n	8 day Lodge Ride and Tour (Mid)
A 2026	12/20/2026 - 12/27/2026	8d / 7n	8 day Lodge Ride and Tour (High)

Min/Max: 4/12

Rates do not include: Gratuities, Drinks or gift shop purchases & Belize departure tax of 40 USD (often included in airfare)

Reservation Form

Tour : _____ **Code #:** _____ **from:** _____ **to :** _____

The Travelers (Last Name, First Name)	Male Female	Single room / or tent	Birth Date MM/DD/YY	Height	Weight	Special diets												
						Special diets	Beginner	Novice	Intermediate	Strong Intern.	Advanced	ride English	ride Western	mostly arena	mostly hacking			
1.	<input type="checkbox"/>	<input type="checkbox"/>				<input type="checkbox"/>	<input type="checkbox"/>	<input type="checkbox"/>	<input type="checkbox"/>	<input type="checkbox"/>	<input type="checkbox"/>	<input type="checkbox"/>	<input type="checkbox"/>	<input type="checkbox"/>	<input type="checkbox"/>	<input type="checkbox"/>	<input type="checkbox"/>	<input type="checkbox"/>
2.	<input type="checkbox"/>	<input type="checkbox"/>				<input type="checkbox"/>	<input type="checkbox"/>	<input type="checkbox"/>	<input type="checkbox"/>	<input type="checkbox"/>	<input type="checkbox"/>	<input type="checkbox"/>	<input type="checkbox"/>	<input type="checkbox"/>	<input type="checkbox"/>	<input type="checkbox"/>	<input type="checkbox"/>	<input type="checkbox"/>
3.	<input type="checkbox"/>	<input type="checkbox"/>				<input type="checkbox"/>	<input type="checkbox"/>	<input type="checkbox"/>	<input type="checkbox"/>	<input type="checkbox"/>	<input type="checkbox"/>	<input type="checkbox"/>	<input type="checkbox"/>	<input type="checkbox"/>	<input type="checkbox"/>	<input type="checkbox"/>	<input type="checkbox"/>	<input type="checkbox"/>
4.	<input type="checkbox"/>	<input type="checkbox"/>				<input type="checkbox"/>	<input type="checkbox"/>	<input type="checkbox"/>	<input type="checkbox"/>	<input type="checkbox"/>	<input type="checkbox"/>	<input type="checkbox"/>	<input type="checkbox"/>	<input type="checkbox"/>	<input type="checkbox"/>	<input type="checkbox"/>	<input type="checkbox"/>	<input type="checkbox"/>

Special Diets: _____

Your fitness level: Excellent Moderate Poor How long have you been riding? _____

How often do you ride? _____ Have you been on other riding tours? No Yes last trip when? _____

If Hidden Trails offers a transfer from the local airport/station: I would like the transfer to be included: YES NO

In an emergency, name and phone number of contact: _____

Attention: Please, if there is more than one participant, all have to sign the reservation form - make copies if needed

With my signature I confirm my reservation of the listed program(s) under the Hidden Trails Booking Conditions. I'm aware, and I made all participants aware of the risk involved with these outdoor adventure activities. All participants have read and agree with the Hidden Trails Booking Conditions and the Hidden Trails Recreational Activity Release and Indemnity Agreement in this brochure or as listed on the Internet.

I (we) will sign and forward the Recreational Activity Release and Indemnity Agreement at least 10 weeks before trip starting date.

Last Name and First Name (The Traveler) _____

Street _____ e-mail _____

City _____ State _____ Postal/Zip Code _____

Phone (wk) _____ (hm) _____ Cell _____ Fax _____

Date _____ Signature (mandatory) 1. _____

Please, charge a 25% deposit (minimum \$ 350 per person) now and full payment 10 weeks before the travel date to my credit card.

For payments by VISA or Mastercard (no debit cards)

Cardholder: _____

Card # _____ 3 digit Security # _____

Exp.Date: _____ Signature _____

Billing Address for Credit Card (if different than mailing address):

I have enclosed a check for the deposit

Additional Signatures:

2. _____
3. _____
4. _____

Travel Cancellation Insurance Credit Card required

Sign me (us) up initial _____

No, we will provide our own initial _____

Hidden Trails

659A Moberly Road
Vancouver, BC
Canada V5Z 4B2

Toll Free: 1-888-9 TRAILS
(1-888-987-2457)

Phone: 604-323-1141
FAX: 604-323-1148



From the U.K.:

Phone 020-323-96201
Fax 0203-004-1200

Skype hiddentrails

E-mail info@hiddentrails.com
Website www.hiddentrails.com

Office hours:
Mo-Fr 8:30 am to 6 pm
Pacific Standard Time

