

Hidden Trails

Ph. 1-888-9-TRAILS

*Equestrian Vacations
- on & with Hidden Trails*

About Hidden Trails



Hidden Trails is owned and operated by nature enthusiasts who love horses and adventure activities. We have been involved with riding and other outdoor vacations for over 20 years.

With our partners Voyage du Cheval (France), Pegasus (Germany) as well as Equitour (Switzerland and France) we have collected the best riding destinations all over the world in some hidden places we would like to share with you.

These rides are about galloping on endless beaches, forging rivers, cantering through forests, trotting along age-old trails, gazing at beautiful vistas and encountering foreign cultures. But most of all, these trips are about getting away from the cycle of too much work and never enough free time.

Escape from the rituals, which long ago froze our nights and days into little more than routine and away from the worries of our new tense times. It is so satisfying when we take the plunge of adventure - it's unfortunate that we invent so many reasons to put aside living our dreams of adventure. It is sometimes a tangled web that we weave through life. Some of the threads reveal a work-a-day world of commitments, duties and obligations. Other threads are of a quiet fabric of hope, responsibility and refreshment.

On our adventures you see the real country, its back country and meet the locals. The love for horses has no boundaries but possesses a common language we all speak and understand. The majority of the overseas rides are from inn to inn, some from castle to castle and a few are camping rides.

You will experience new countries and their customs and make new friends. The Hidden Trails trips are the best you can find.

They have been tested by our staff or associates and received our stamp of approval. If you are considering a special riding vacation anywhere in the world, call us first and let our experienced consultants match the perfect trip with your dream.

We will listen to you and give you objective advice to help you choose the best destination and adventure.

Your vacation is the most precious time of the year and we are committed to making it the most memorable time of your life. Wherever you go, have a great time and bring back some peace of mind.

Thank you for your continued support.

Hidden Trails

Phone: 604-323-1141

Fax: 604-323-1148

Toll Free: 1-888-9-TRAILS

from within the USA or Canada or

E-mail: info@hiddentrails.com

Website: www.hiddentrails.com

Address:

659A Moberly Road, Vancouver BC Canada V5Z 4B3 or

4406 Tennyson Road, Wilmington, DE 19802 USA

Toll Free from the U.K.:

Ph: 0- 808 189-0420

Fax: 0-808-280-1860

Toll Free Worldwide:

Skype: hiddentrails

Masai Mara Ride - Aloe Blossom - Kenya, East Africa

Tour Code: IT-KYRT01

9 days / 8 nights ~\$9,300.00

Dates: Available all Year

Trip Rating: ●●●●●

Difficulty: ●●●●●

Lodging: ▲▲▲

Tack: English tack - General all purpose Eng...

Horses: Somali-Arab crossbreds & Thoroughbreds...

Pace: Moderate with long trots and canters, ...
Walk, Trot, Canter,

Airport: Jomo Kenyatta International Airport (NBO)



Introduction

Masai Mara, Kenya

A nine-day exploration safari on horseback in the Masai Mara wilderness area.

The Masai Mara Game Reserve and Greater Mara Conservancies represent most people's idea of East Africa. The landscape is one of rolling savanna, intersected by dark green veins of riverine woodland on the banks of the Mara and Talek rivers. This wilderness is an extension of the Serengeti (Tanzania) ecosystem and is considered by many to be Kenya's best wildlife sanctuary, where animals can still be seen in vast numbers. Lion, leopard, cheetah, elephant, hippo, crocodile, antelope and gazelle are some of the many species to be found. The annual migration of up to one million wildebeest is most dramatic and considered to be one of the greatest wildlife spectacles in the world. Needless to say, both wildlife and bird viewing are phenomenal. The Mara is also home to the colorful and handsome Masai people who, with their herds of livestock, are synonymous with the region.

The Masai Mara Game Reserve & Greater Mara Conservancies
Altitude 5,000-6,000 ft. ~ Area 5,000 sq. km ~ Gazetted in 1961.

Accommodation

Accommodations

This is a wilderness ride, so nights are spent camping in different locations.

Description

We specialize in traditional mobile safaris under canvas tents. Our private camps are positioned in the most beautiful areas usually under a canopy of trees or overlooking a stream. The mosquito-proof tents are simply furnished in traditional safari-style camping with double or single beds, carpets, and bedside tables. Egyptian cotton sheets and warm feather duvets adorn the beds and hot water bottles are provided for the cool nights. We have 8 tents total. Separate canvas shower (soap and shampoo provided) and loo units are placed behind each tent.

Laundry is available. Items may be charged in a car using either a cigarette lighter socket or the car inverter system.

As we are camping in the wilderness, there will be no WIFI access.



9day/ 8night Accommodation Itinerary - subject to changes based on availability

Night 1 & 2: Nkilenya, Lemek Conservancy

Night 3 & 4: Mara River, Mara North Conservancy

Night 5 & 6: Out Of Africa Camp, Mara Triangle

Night 7 & 8: KO8, Mara North Conservancy

7day/ 6 night Accommodation Itinerary - subject to changes based on availability

Night 1 & 2: Nkilenya, Lemek Conservancy

Night 3 & 4: Mara River, Mara North Conservancy

Night 5 & 6: KO8, Mara North Conservancy

Room Occupancy

Single supplement is not mandatory if you are willing to share.





Meals

All meals are included from lunch on Day 1 to breakfast on your last day.

The dining tent is furnished with tables and chairs for elegant meals in camp, which include a variety of fresh fruits, vegetables, meats, fish, and fowl. These meals are prepared over open fires by our camp chefs and served by waiters. All food is locally sourced with 'full-monty' breakfasts, alfresco lunches, and candlelight dinners. Bread is baked daily and ice is made in our safari freezer.

The bush-bar is stocked with imported wines and spirits along with a selection of local beers, sodas, and bottled water.

Dietary Restrictions

We can cater to most dietary restrictions with prior notice.

Riding



Riding Level

Participants should be competent and confident at all paces (surprises in the bush cannot be predicted) and have an intermediate level of fitness and riding ability. Riders must have the ability to trot for stretches of 10 minutes at a time and be able to gallop out of trouble.

The guide will assess the capability of each rider and should he feel that any rider is not competent and therefore imposes a risk to themselves or others, he will ask them to continue the safari in a vehicle rather than on horseback.

Pace

We ride between 4 to 8 hours, covering 20 to 50 kilometers per day. Full days of riding when we move camp are alternated with days where we ride out of camp and return for lunch and a siesta in the afternoon.

Horses

Our stable is home to over 25 safari horses – a mixture of Somali-Arab crossbred and thoroughbreds. The majority of these have been bred and raised at home on our wildlife conservancy in central Kenya. Living at close quarters with wild animals, our horses are familiar with being amongst big game, have great endurance and are evenly tempered. Under the professional guidance of our horse master and her team of grooms, each safari horse is carefully schooled, exercised, and loved, for the sole purpose of carrying our guests safely through the African wilderness.

Tack

We ride in the English style using very comfortable French cavalry and English general-purpose saddles. Most horses are tacked in a snaffle bridle and double-sided saddlebags are provided for each member to carry water bottles, cameras, and rain gear.

Safety

A professional riding guide leads every safari. A safety briefing is given at the beginning of the safari with detailed information about how to handle a big game situation.

A small medical kit is carried on horseback and a more comprehensive kit is kept in camps.

The mobile camps, vehicles, and guides have radio communication, mobile phones, or satellite phones in case of an emergency.

Insurance

It is one of our conditions that all guest must have adequate medical and comprehensive travel insurance in case of cancellation, curtailment and other emergencies, should they arise. Insurance details must be provided prior to travel.

Flying Doctor

We provide all our clients with membership to the Flying Doctors Society of Kenya. This service covers emergency medical evacuation to a hospital in Nairobi, at which point your personal medical insurance will take effect.

Weight Limit

Our weight limit is 90 kg (200 lbs). However, we can offer a special program for heavier riders, including shorter rides, game drives, walks and cultural visits.

Staff



Gordie was initiated into the safari world as a youngster. Born in Kenya, he guided his first safari aged 18 and has over 30 years' experience in the bush. Today, his untamed love of all things wild and his passion and respect for Africa's people and wildlife, make Gordie a fascinating and inspiring character.

Felicia's talents encompass all aspects of safari – she's a brilliant equestrian, an inventive chef, a qualified Bowen therapist and engaging company. She married Gordie in 2014.

Pete has been a professional safari guide for over 45 years. He has dedicated much of his life to conservation and is very proud to have been a founder member of the Masai Mara Conservancy and an honorary warden with the Kenya Wildlife Service.

Pierre is a third generation Kenyan who grew up living under canvas with his father, a well-known conservationist. He feels most at home in the bush. Pierre spends all of his time on safari with guests or friends. His love of the bush is contagious and his knowledge is outstanding.

Non-Riders

Non-riding participants are welcome to join their riding partners. They will spend their days game viewing in a safari vehicle (4x4) or on foot with their own professional safari guide.

Itinerary



Sample Itinerary: 9-day program - subject to changes

Day 0: Pre-trip night

On arrival in Nairobi we will meet you at Jomo Kenyatta International Airport and transfer you to your hotel (meals and overnight not included).

Day 1: Flight to Mara

You will be met and transferred from your hotel to Wilson airport for a safari briefing. Our morning flights departs at 10:30am and arrives in the Mara at approximately 11:15am. Your professional safari riding guide will meet you there for a game drive to our private-canvas mobile camp arriving in time for lunch. The afternoon is spent settling in, followed by a short ride or game drive.

Riding distance: 5-10km

Meals: Lunch and dinner

Accommodations: Nkilenya, Lemek Conservancy

Day 2: Lemek Ride

Morning and afternoon exploring the riverine forests and open plains of Lemek. There is an abundance of wildlife here including giraffe, warthog, zebra, hartebeest, topi, wildebeest, and with a little luck, cheetah and leopard too. Bloody Marys in the morning and Pink Gin for 'sundowners' in the evening. All-in-all, a heavenly first day on safari.

Riding distance: 10-15km

Meals: All meals in camp

Accommodations: Nkilenya, Lemek Conservancy

Day 3: Mara River Ride

Our first full day in the saddle takes us through spectacular wildlife country with impala, gazelle, elephant, buffalo, ostrich, and more! Picnic lunch is enjoyed in a patch of forest called Olomai. After a siesta, we ride to banks of the Mara River with its' large pods of hippo and the odd monster crocodile.

Riding distance: 20-25km

Meals: Breakfast and dinner in camp, picnic lunch

Accommodations: Mara River, North Conservancy

Day 4: Siria Escarpment Ride

A stunning area to traverse by horse or vehicle. We may ford the Mara River and ride under the iconic Siria Escarpment. The concentration of game is breathtaking and with plenty of opportunity to jump fallen trees created by the resident elephant. Waterbuck, eland, jackal, hyena, and lion occur, as do many other wildlife species.

Riding distance: 10-15km

Meals: All meals in camp

Accommodations: Mara River, North Conservancy

Day 5: Mara Triangle Ride

After a 'full-monty' breakfast we ride in a southerly direction across the Maternity Plain. Stunning views in every direction and excellent going for the horses. We cross the Mara River on horseback and enter the famous Mara Triangle. Picnic lunch is enjoyed in a patch of thick forest often occupied by elephant. After lunch, a short ride, followed by an ascent on foot, to the top of the escarpment.

Riding distance: 20-25km

Meals: Breakfast and dinner in camp, picnic lunch

Accommodations: Out Of Africa Camp, Mara Triangle

Day 6: Game Ride in Mara Triangle

Options to ride and drive in the triangle with magical views looking down towards the Serengeti in the distance. This corner of the ecosystem is blessed with croton thickets, forest, and endless tall grasslands, the perfect environment for rhino, elephant, buffalo, and lion. In the late afternoon we may visit a small traditional homestead of our local Masai hosts.

Riding distance: 10-15km

Meals: All meals in camp

Accommodations: Out Of Africa Camp, Mara Triangle

Day 7: Koiyaki Plain Ride



Today we descend the escarpment on foot and head due east, riding back over the Mara River, skirting the large village of Riinta and onwards, to a lovely picnic lunch under scattered acacia trees. After a long siesta we ride over the Koiyaki Plain and to our new camp on the Olare Orok Stream, used by the Masai to water their cattle.

Riding distance: 20-25km

Meals: Breakfast and dinner in camp, picnic lunch

Accommodations: KO8, Mara North Conservancy

Day 8: Mara North Conservancy Ride

Morning and afternoon ride, drive or walk, in this magical corner of the Mara. Exceptional riding country, where two large prides of lion make this area their home, allowing for sensational big-cat experience. We may go out after supper by vehicle with a spotlight to discover nocturnal creatures.

Riding distance: 15-20km

Meals: All meals in camp

Accommodations: KO8, Mara North Conservancy

Day 9: Flight to Nairobi

Our last morning ride or drive following the banks of the river. Wonderful opportunities for long canters over the Serian and Maternity plains. After a hearty brunch we say our goodbyes to the horses and camp crew. Our afternoon flight to Nairobi departs at 2:45pm. Upon arrival at approximately 4:15pm, you will be transferred to JKIA for your international flight home.

Riding distance: 10-15km

Meals: Brunch in camp



Sample Itinerary: 7-day program - subject to changes

Day 0: Pre-trip night

On arrival in Nairobi we will meet you at Jomo Kenyatta International Airport and transfer you to your hotel (meals and overnight not included).

Day 1: Flight to Mara

You will be met and transferred from your hotel to Wilson airport for a safari briefing. Our morning flights departs at 10:30am and arrives in the Mara at approximately 11:15am. Your professional safari riding guide will meet you there for a game drive to our private-canvas mobile camp arriving in time for lunch. The afternoon is spent settling in, followed by a short ride or game drive.

Riding distance: 5-10km

Meals: Lunch and dinner

Accommodations: Nkilenya, Lemek Conservancy

Day 2: Lemek Ride

Morning and afternoon exploring the riverine forests and open plains of Lemek. There is an abundance of wildlife here including giraffe, warthog, zebra, hartebeest, topi, wildebeest, and with a little luck, cheetah and leopard too. Bloody Marus in the morning and Pink Gin for 'sundowners' in the evening. All-in-all, a heavenly first day on safari.

Riding distance: 10-15km

Meals: All meals in camp

Accommodations: Nkilenya, Lemek Conservancy

Day 3: Mara River Ride

Our first full day in the saddle takes us through spectacular wildlife country with impala, gazelle, elephant, buffalo, ostrich, and more! Picnic lunch is enjoyed in a patch of forest called Olomai. After a siesta, we ride to banks of the Mara River with its' large pods of hippo and the odd monster crocodile.

Riding distance: 20-25km

Meals: Breakfast and dinner in camp, picnic lunch

Accommodations: Mara River, North Conservancy

Day 4: Siria Escarpment Ride

A stunning area to traverse by horse or vehicle. We may ford the Mara River and ride under the iconic Siria Escarpment. The concentration of game is breathtaking and with plenty of opportunity to jump fallen trees created by the resident elephant. Waterbuck, eland, jackal, hyena, and lion occur, as do many other wildlife species.

Riding distance: 10-15km

Meals: All meals in camp

Accommodations: Mara River, North Conservancy

Day 5: Maternity Plain Ride

After a 'full-monty' breakfast we ride in a southerly direction across the Maternity Plain. Stunning views in every direction and excellent going for the horses. Picnic lunch is enjoyed in a patch of thick forest often occupied by elephant. After a long siesta we ride past a game-rich saltlick and onwards to our new camp on the Olare Orok Stream, used by the Masai to water their cattle.

Riding distance: 20-25km

Meals: Breakfast and dinner in camp, picnic lunch

Accommodations: KO8, Mara North Conservancy

Day 6: Mara North Conservancy Ride

Morning and afternoon ride, drive or walk, in this magical corner of the Mara. Exceptional riding country, where two large prides of lion make this area their home, allowing for sensational big-cat experience. We may go out after supper by vehicle with a spotlight to discover nocturnal creatures.

Riding distance: 15-20km

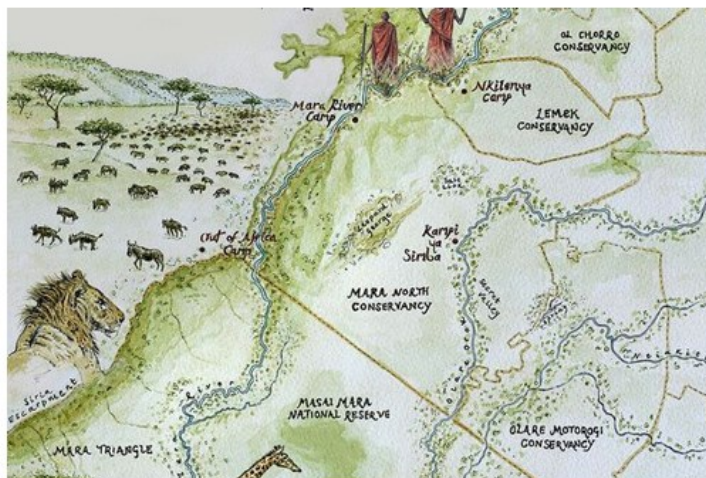
Meals: All meals in camp
Accommodations: KO8, Mara North Conservancy

Day 7: Flight to Nairobi

Our last morning ride or drive following the banks of the river. Wonderful opportunities for long canters over the Serian and Maternity plains. After a hearty brunch we say our goodbyes to the horses and camp crew. Our afternoon flight to Nairobi departs at 2:45pm and lands at 4:15pm. You will be transferred to JKIA for your international flight home.

Riding distance: 10-15km

Meals: Brunch in camp



Non-Riders

Non-Riders are welcome! They will spend their days game viewing in our customized safari vehicle with their own professional safari guide.

Other Info

Meeting: Hotel in Nairobi

Airport: Jomo Kenyatta International Airport (NBO)

Transfer: Kenya International Airport/ hotel

Distance: 150 miles

Transfers are included for this trip. Since rarely any flights arrive in time for the transfer on Day 1, please arrive the night before. Our partners can pick you up from the Jomo Kenyatta International Airport (NBO) once your flight lands and drop you off at your hotel (night at the hotel not included in the package). On Day 1, you will be picked up from your hotel in Nairobi around 9:00am and transferred to Wilson Airport. The flight departs at 10:30am and lands in the Mara for 11:15am. On the last day, your flight departs at 2:45pm and lands at the Wilson Airport for 4:15pm. You will then be transferred to Jomo Kenyatta International Airport.

Tack: English tack - General all purpose English saddles, and French Calvalry saddles. Mos horses go in a snaffle bit. Double sided saddle bags are provided.

Horses: Somali-Arab crossbreds & Thoroughbreds.

Pace: Moderate with long trots and canters, 4-8 hrs per day, covering 20-40km

Walk | Trot | Canter |

Level: 🐾🐾🐾🐾🐾 (3 to 3 out of 5) Intermediate+

Age: Min 8 Max 80

Weight: 200 lbs / 90 kg

Riders: Min 4 riders

Max 12 riders
(per riding group)

Max Capacity 12

Rates and Dates 2024 - IT-KYRT01

Rates include: Accommodations, All meals, All drinks in camp including bottled drinking water , 7 or 9 riding days (depending on program) with a Kenya Professional Safari Guide, Safari cr (cooks, waiters, mechanics, drivers, grooms, porters and tent stewards), 4x4 game viewing vehicles, Day & night game drives, Laundry in camp, Flying Doctors Membership, Airport Transfe Return flight Nairobi-Mara & Gov't taxes

Packages and Options

| Season | Description | ~US\$ |
|--------|---|---------|
| A 2024 | 9 day trip | \$9300 |
| | Wilderness Conservancy Fee (MANDATORY) | \$1500 |
| | Small group supplement (4 guests or less), pp | \$11250 |
| | Single room supplement (requested) | \$2500 |
| B 2024 | 7 day trip | \$6845 |
| | Wilderness Conservancy Fee (MANDATORY) | \$1150 |
| | Small group supplement (4 guests or less), pp | \$9500 |
| | Single room supplement (requested) | \$2000 |

Transfer Option

Description

| | |
|------|---|
| 2024 | Return flight from Nairobi - Mara - Nairobi included. |
| 2024 | Transfer included from Jomo Kenyatta International Airport to hotel on Day 0, return. |

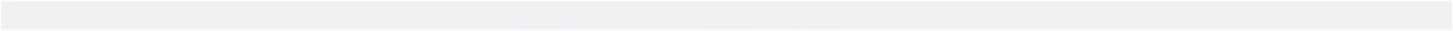
Tour Dates

| Season | Tour Dates | | |
|--------|-------------------------|---------|------------|
| A 2024 | 06/23/2024 - 07/01/2024 | 9d / 8n | 9 day trip |
| B 2024 | 07/07/2024 - 07/13/2024 | 7d / 6n | 7 day trip |
| A 2024 | 08/02/2024 - 08/10/2024 | 9d / 8n | 9 day trip |
| B 2024 | 09/05/2024 - 09/11/2024 | 7d / 6n | 7 day trip |
| B 2024 | 09/13/2024 - 09/19/2024 | 7d / 6n | 7 day trip |
| A 2024 | 09/21/2024 - 09/29/2024 | 9d / 8n | 9 day trip |
| A 2024 | 10/01/2024 - 10/09/2024 | 9d / 8n | 9 day trip |

Min/Max: 4/12

Additional dates are available on request (except for April, May and November) - Book early - space is very limited in the Mara. Enquire for private departure or as an extension to a beach stay or a visit to the gorillas, etc.

Rates do not include:Gratuities, Insurance (mandatory), Wilderness Conservancy Fee (mandatory), Accommodation and meals outside of safari itinerary (Day 0) & Champagne, premium spirits, and cellar wines.



Reservation Form

Tour : _____ Code #: _____ from: _____ to : _____

| The Travelers (Last Name, First Name) | Male Female | Single room / or tent | Birth Date MM/DD/YY | Height | Weight | Special diets | | | | | | | | | | | | | |
|--|--------------------------|-----------------------------|------------------------|--------|--------|--------------------------|--------------------------|--------------------------|--------------------------|--------------------------|--------------------------|--------------------------|--------------------------|--------------------------|--------------------------|--------------------------|--------------------------|--------------------------|--------------------------|
| | | | | | | Special diets | Beginner | Novice | Intermediate | Strong Inter. | Advanced | ride English | ride Western | mostly arena | mostly hacking | | | | |
| 1. _____ | <input type="checkbox"/> | <input type="checkbox"/> | _____ | _____ | _____ | <input type="checkbox"/> | <input type="checkbox"/> | <input type="checkbox"/> | <input type="checkbox"/> | <input type="checkbox"/> | <input type="checkbox"/> | <input type="checkbox"/> | <input type="checkbox"/> | <input type="checkbox"/> | <input type="checkbox"/> | <input type="checkbox"/> | <input type="checkbox"/> | <input type="checkbox"/> | <input type="checkbox"/> |
| 2. _____ | <input type="checkbox"/> | <input type="checkbox"/> | _____ | _____ | _____ | <input type="checkbox"/> | <input type="checkbox"/> | <input type="checkbox"/> | <input type="checkbox"/> | <input type="checkbox"/> | <input type="checkbox"/> | <input type="checkbox"/> | <input type="checkbox"/> | <input type="checkbox"/> | <input type="checkbox"/> | <input type="checkbox"/> | <input type="checkbox"/> | <input type="checkbox"/> | <input type="checkbox"/> |
| 3. _____ | <input type="checkbox"/> | <input type="checkbox"/> | _____ | _____ | _____ | <input type="checkbox"/> | <input type="checkbox"/> | <input type="checkbox"/> | <input type="checkbox"/> | <input type="checkbox"/> | <input type="checkbox"/> | <input type="checkbox"/> | <input type="checkbox"/> | <input type="checkbox"/> | <input type="checkbox"/> | <input type="checkbox"/> | <input type="checkbox"/> | <input type="checkbox"/> | <input type="checkbox"/> |
| 4. _____ | <input type="checkbox"/> | <input type="checkbox"/> | _____ | _____ | _____ | <input type="checkbox"/> | <input type="checkbox"/> | <input type="checkbox"/> | <input type="checkbox"/> | <input type="checkbox"/> | <input type="checkbox"/> | <input type="checkbox"/> | <input type="checkbox"/> | <input type="checkbox"/> | <input type="checkbox"/> | <input type="checkbox"/> | <input type="checkbox"/> | <input type="checkbox"/> | <input type="checkbox"/> |

Special Diets: _____

Your fitness level: Excellent ☐ Moderate ☐ Poor ☐ How long have you been riding? _____

How often do you ride? _____ Have you been on other riding tours? No ☐ Yes ☐ last trip when? _____

If Hidden Trails offers a transfer from the local airport/station: I would like the transfer to be included: YES ☐ NO ☐

In an emergency, name and phone number of contact: _____

Attention: Please, if there is more than one participant, all have to sign the reservation form - make copies if needed

With my signature I confirm my reservation of the listed program(s) under the Hidden Trails Booking Conditions. I'm aware, and I made all participants aware of the risk involved with these outdoor adventure activities. All participants have read and agree with the Hidden Trails Booking Conditions and the Hidden Trails Recreational Activity Release and Indemnity Agreement in this brochure or as listed on the Internet.

I (we) will sign and forward the Recreational Activity Release and Indemnity Agreement at least 10 weeks before trip starting date.

Last Name and First Name (The Traveler) _____

Street _____ e-mail _____

City _____ State _____ Postal/Zip Code _____

Phone (wk) _____ (hm) _____ Cell _____ Fax _____

Date _____ Signature (mandatory) 1. _____

Please, charge a 25% deposit (minimum \$ 350 per person) now and full payment 10 weeks before the travel date to my credit card.

For payments by VISA ☐ or Mastercard ☐ (no debit cards)

Cardholder: _____

Card # _____ 3 digit Security # _____

Exp.Date: _____ Signature _____

Billing Address for Credit Card (if different than mailing address):

I have enclosed a check for the deposit ☐

Additional Signatures:

2. _____
3. _____
4. _____

Travel Cancellation Insurance Credit Card required

Sign me (us) up ☐ initial _____

No, we will provide our own ☐ initial _____

Hidden Trails Ltd. 659A Moberly Road Vancouver, BC V5Z 4B3 FAX: 604-323-1148 Phone: 604-323-1141

Hidden Trails

659A Moberly Road
Vancouver, BC
Canada V5Z 4B2

Toll Free: 1-888-9 TRAILS
(1-888-987-2457)

Phone: 604-323-1141

FAX: 604-323-1148

From the U.K.:

Phone 020-323-96201

Fax 0203-004-1200

Skype hiddentrails

E-mail info@hiddentrails.com

Website www.hiddentrails.com

Office hours:

Mo-Fr 8:30 am to 6 pm

Pacific Standard Time

