

Hidden Trails

PH. 1-888-9-TRAILS

*Outdoor Vacations
- on & with Hidden Trails*

About Hidden Trails



Explore the World on & with Hidden Trails

Hidden Trails is owned and operated by nature enthusiasts who love the outdoors and adventure activities. We have been involved with outdoor vacations for over 20 years. We have collected the best outdoor vacation destinations all over the world in some hidden places we would like to share with you.

These vacations are about forging rivers, biking along canals and through forests, hiking along age-old trails, gazing at beautiful vistas and encountering foreign cultures. But most of all, these trips are about getting away from the cycle of too much work and never enough free time.

Escape from the rituals, which long ago froze our nights and days into little more than routine and away from the worries of our new tense times. It is so satisfying when we take the plunge of adventure - it's unfortunate that we invent so many reasons to put aside living our dreams of adventure. It is sometimes a tangled web that we weave through life. Some of the threads reveal a work-a-day world of commitments, duties and obligations. Other threads are of a quiet fabric of hope, responsibility and refreshment.

On our adventures you see the real country, its back country and meet the locals. The love for the outdoors has no boundaries but possesses a common language we all speak and understand.

You will experience new countries and their customs and make new friends.

These trips have been tested by our staff or associates and received our stamp of approval. If you are considering a special outdoor vacation anywhere in the world, call us first and let our experienced consultants match the perfect trip with your dream. We will listen to you and give you objective advice to help you choose the best destination and adventure.

Your vacation is the most precious time of the year and we are committed to making it the most memorable time of your life. Wherever you go, have a great time and bring back some peace of mind.

Thank you for your continued support.

Ryan Schmidt
Hidden Trails

Hidden Trails

Phone: 604-323-1141

Fax: 604-323-1148

Toll Free: 1-888-9-TRAILS

from within the USA or Canada or

E-mail: info@hiddentrails.com

Website: www.hiddentrails.com/outdoor

Address:

659A Moberly Road, Vancouver BC Canada V5Z 4B3

4406 Tennyson Road, Wilmington, DE USA 19802

Toll Free from the U.K.:

Ph: 0- 808 189-0420

Fax: 0-808-280-1860

Toll Free Worldwide:

Skype: hiddentrails

Touch the Sky Trail - Ecuador, South America

Tour Code: IT-ECSR03
8 days / 7 nights ~\$3,165.00
Dates: Available all Year

Trip Rating: ●●●●●
Difficulty: ●●●●●
Lodging: ●●●

Tack: The South American tack utilized is ve...
Horses: Zuletenan breed; a mixture between And...
Pace: Slow moderate with trots and canters a...
Walk,Trot,Canter,

Airport: Quito



Introduction

Haciendas, Ecuador

Join us on a beautiful equestrian getaway in the highlands of Ecuador, your base at the historic and charming Hacienda Zuleta. Giving name to a whole valley and a small village, Zuleta is an excellent place for an intimate encounter with Andean culture and tradition. Upon stepping through its 16th century gates, you will feel as if you were traveling back in time. Situated in the pastoral Zuleta Valley, the hacienda is home to the most exclusive barn in Ecuador and combines excellent quality horses with outstanding service on a famous colonial hacienda. The five thousand acre estate is nestled 2 hours North of Quito in the Andes Mountains at 9,000 feet.

Throughout the many years, Zuleta has entertained presidents and their families, dignitaries and also celebrities, and therefore our staff knows how to truly make your stay unforgettable. Family recipe dishes made of farm fresh products, complimentary birthday surprises, your own personal favorite juice to start each morning, extra hot water bottle when nights are chilly and some fresh flowers on your picnic table – it is the little details that make you feel at home at Zuleta.

The vacation starts with a pick up from Quito, and on the way we can stop at the famous indigenous Otavalo market. The next five riding days are on board their top quality horses and are filled with exciting new sights and trails each day. Climb to the top of the volcanoes and ride through lush green valleys - the riding is only interrupted each day by the luxuriously set out lunches along the way. In the evening you come back to the historic hacienda and after a delicious organic meal we invite you to sit around the fireplace and talk about the excitements of your daily experiences.

Accommodation

Accommodations

This is a stationary ride, so all nights are spent at the same location.

Description

This beautiful estate is owned by the descendents of former Ecuadorian president, Galo Plaza. The hacienda offers all the comforts of a well-establish hotel. Here you are a guest of the Plaza family and you are welcomed as such.

The hacienda has 2 standard rooms, 9 deluxe rooms, 8 junior suites and 2 suites. All rooms are located in the main building (dating back to 1691) and come with a fireplace as well as a private bath tub (with hair dryer and toiletries). Rooms are decorated with hand-embroidered linens and feature beautiful garden views. On cold nights, we provide you with a hot water bottle in your bed, to keep it warm. There is wireless internet in all rooms to keep you connected to the outside world, if you wish to.

You will be invited to relax at your leisure in the cozy reading and living rooms, which have entertained their own entourage of famous visitors including past presidents and dignitaries.

You can use our laundry service for an additional cost.



Standard Room (12-15 m²)

These rooms all come with a Queen size bed, a desk, chairs, a fireplace, a cupboard and luggage rack. No extra bed possible.





Deluxe Room (20 m²)

These rooms all come with a Queen size bed (or twin beds), a desk, chairs, a fireplace, a cupboard and luggage rack. An extra bed can be added.



Junior Suite (30 m²)

These rooms all come with a King size bed (or twin beds), a desk, chairs, a sofa, a fireplace, a cupboard and 2 large luggage racks. An extra bed can be added.



Suite (42 m²)

These rooms all come with their own living room with 2 sofas, a desk, chairs, a fireplace, a cupboard and 2 large luggage racks. An extra bed can be added.

General Amenities of the Hacienda

- Main Living Room (Information folders & books, Tea & coffee table, Fireplace and Honor Bar)
- Library Living Room (Tea & coffee table, 1.500 books in five languages, Fireplace and Winter garden with view to the stables)
- Activity Room (Trail maps, Water bottle refilling station, Wellington boots, Newsboard with recommendations, Direct TV and video library and Table games)
- Hummingbird Patio (Sun chairs and sitting areas, Ten varieties of hummingbirds and Bar service)
- Wellness Center (Sauna, Steam bath, Japanese bath & Massages) - extra cost

Room Occupancy

Single supplement is mandatory if we cannot find another rider to share.





Meals

All meals are included from lunch on Day 1 to breakfast on your last day.

As your dining experience unfolds; you will be impressed by the Hacienda's sustainability. It is a self-sufficient farm, producing its own rainbow trout, organic vegetables, cheese, etc... Delicious snacks like banana cake, farm made cheeses, fresh juice or anything else you could think of are served in the living rooms all day long. The meals will be typical Ecuadorian "family" cuisine. Virtually everything gracing the table comes fresh from Zuleta's rich earth and is carefully prepared by hand. Fresh milk and cream from Zuleta's dairy cows are offered daily. Handmade cheeses are produced from the farm's fresh milk and carefully crafted in the small factory near the guest house. Rainbow trout are caught moments before melting in your mouth. Freshly churned butter melts over warm bread baked from wheat harvested on the Hacienda. Fresh organic fruit and vegetables are picked from the expansive garden to make unforgettable salads and freshly squeezed juices. In addition, gourmet picnic lunches with fine wine and cheeses are provided for all-day excursions.

Meals are served in the main family dining room where you will be able to meet members of the family and other guests; or if you prefer privacy, we can also arrange tables in a private dining hall.

Dietary Restrictions

We can cater to vegetarians if given prior notice.



Riding

Terrain

Riders will have numerous opportunities to explore the Andean countryside along high altitude trails (between 9,000 and 13,000 feet) that wind through 'páramo' grasslands and cloud forest, along cobblestone trails and through local villages.

Horses

The Hacienda is known not only for its prize-winning pure Andalusians including national champions and precious stallions, but especially for its very own breed – the Zuleteño. The Hacienda was the first to bring purebred horses to Ecuador, starting with Quarter Horse and Thoroughbred and changing to Andalusians in the early 60s. The Zuleteño is a combination of those three breeds and known for its qualities as a very noble, gentle and versatile horse. The horses respond best to light, but clear signals. They are used to being ridden with a soft hand and slack in the reins. They are taught to neck rein.

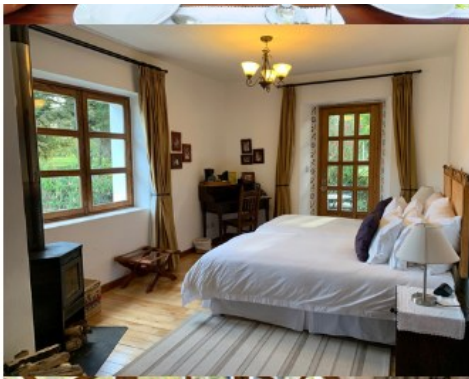
Every horse is known for its specialties. Some have advanced training in dressage and Spanish riding, others in taking perfect care of small children,... You will be able to pick your favorite horse of the herd, for your whole stay, or just for the day's activity.

Guides

You will be in safe hands with our knowledgeable, friendly local guides. All excursions are accompanied by a local guide, although an English speaking guide is also available for an extra cost.

Itinerary





Sample-Itinerary - subject to changes

Note: These tours are just a sample of the many options we have. Please remember that pace, distance and destinations depend on you, almost everything is possible for us and our great horses.

Day 1: Arrival

You arrive in the afternoon after a drive through lush pasture lands. With some luck, you will have stunning views of the snowcapped volcano, Cayambe, which is just a few miles away. One of our hosts will welcome you personally upon arrival, and assist you with check in to your guest suite. Once settled, the herd will be waiting for you to choose your horse for the first ride and you will get the chance to try it in the ring at all paces. A bilingual riding instructor is available for your questions. After lunch, we will ride up to Santa Rosa, through forest and dense vegetation up to a view point from where you have an overview of the whole Zuleta valley. As we will be right above the Condor center and close to a feeding point, we will most likely see a wild condor fly by. Up here, you will also have the best bird's eye view of the ancient pre-Incan Caranqui pyramids that are spread all over the property. The loop continues with beautiful vistas of mountain slopes painted by that special afternoon light, and maybe a family of spectacle bears or foxes will come to say hello. Leaving the forest, we will canter over a field with high grass, before we have to focus on our balance when the horse starts to climb down. Upon reaching flat grounds, with the barn at a short distance, the horses will volunteer a last gallop with some jumps over small ditches. A nice glass of wine in the living room, a roaring fire, comfortable sofas and a chat with your host will entertain you until dinner time.

Day 2-4 or 2-7: Riding Activities

Partake in half-day rides, combining two shorter rides or a longer trail. See trail examples below.

Day 5 or 8: Goodbye

After breakfast, we invite you to explore our organic garden, where you can learn about permaculture and see where the ingredients for our menu originate. You can explore the farm operation, feed baby calves, count sheep, talk to the vaqueros (local Cowboys), enjoy our embroidery shop, or relax in the garden before leaving for your next destination.



Half Day Trail Ride Examples (included in package)

The Condor Project

Our most popular route is to the Condor Huasi Project facilities located in La Rinconada de San Pedro Valley. Here you can learn about Zuleta's wildlife as well as our efforts to protect and nurture endangered condors and spectacled bears. We ride past the Hacienda's pastures, milking sheds, and trout farm via pretty cobblestone roads. You will see many ancient Caranqui tolas – pyramids dating from before the Inca conquest. On the way back, you may choose to climb the highest ceremonial pyramid, which offers great views of the area. You may also see wild condors taking advantage of the high winds on the mountainside. The ride includes an hour-long talk, approximately, at the Condor Huasi facilities.

Estimated Time: 4 hours (including 1 hour talk approx.)

Difficulty Level: Easy

Minimum Age Requirement: 6 years

Suggested Departure Time: 10 AM or 2 PM

Elevation: 2,964-3,018 m / 9,724-9,901 ft

Zuleta Cultural Tour

For a more in-depth look at the history and culture of Zuleta, we take you through the village to an interesting house museum at the community's highest point. Here you will find many well-preserved examples of Zuleta's traditional farming, weaving, and cooking implements as well as weapons, fine leatherwork, and other interesting ephemera. If the weather permits, we will see stunning views of snow-capped Mount Cayambe and the surrounding landscape. On the way, we will also stop by the community's famous embroidery shops where you can learn about this centuries-old art and purchase some lovely gifts later if you wish. The ride incorporates views of the cemetery, town hall, and church as well as some historic adobe-and-tile-roof houses. There is also an opportunity to see a local leather specialist who makes all of the Hacienda's saddles and leatherwork. To take



full advantage of this ride, we recommend taking a bilingual guide for an extra charge.

Estimated Time: 3-4 hours

Difficulty Level: Easy

Minimum Age Requirement: 6-8 years

Suggested Departure Time: 8:30/9 AM or 2 PM

Elevation: 2,964-3,018 m / 9,724-9,901 ft

Uphill Riding

Stand on the shoulders of the mountains as we venture to the pinnacle of Santa Rosa. First, we climb winding paths, glimpsing the Hacienda through eucalyptus trees. We then pass a small reservoir and waterfall as we continue on to the high pastures where the entire valley opens up before us. On a clear day, we can see snowcapped volcanos Cayambe and Cotapaxi to the left in the distance, with Mount Imbabura towering across the vale. Further north, the mountains meander down beyond Angochagua and La Rinconada to the city of Ibarra, while behind us lies the mysterious wilderness of the Andean páramo. We circle round to the Vista Condor to catch magnificent views of La Rinconada de San Pedro Valley, with its condor facilities and Caranqui pyramids, before returning home through fragrant cypress and eucalyptus groves.

Estimated Time: 3-4 hours

Difficulty Level: Intermediate

Minimum Age Requirement: 6-8 years

Suggested Departure Time: 8:30/9 AM or 2 PM

Elevation: 2,964-3,239m / 9,724-10,921 ft

Mount Cunrro

This ride gives us a chance to see a different side of the Zuleta valley. We leave from the main gate, passing through the village, then climb through pastures and fields towards Mount Cunrro, an extinct volcano. If weather permits, we may see behind us the glorious Mount Cayambe, a snowy peak with an elevation of 5,790 masl (almost 19,000 ft!). Cunrro dominates this side of the valley – a vast, conical hill jutting from the foot of Mount Imbabura and surrounded by woodland at its base. We pass through cool eucalyptus groves and, at the summit, enjoy views of Zuleta's green, furrowed mountains stretching all the way from the Hacienda through to Angochagua and towards Ibarra. After a short rest, we descend back to the village and return to the Hacienda.

Estimated Time: 3-4 hours

Difficulty Level: Intermediate

Minimum Age Requirement: 6-8 years

Suggested Departure Time: 8:30/9 AM or 2 PM

Elevation: 2,964-3,300 m / 9,724-10,826 ft

Angochagua Cultural Ride

We head north of the property, past Rosario's milking sheds and verdant fields, where we can take a quick detour to the waterfall if you wish. At the Hacienda's limits, we reach a road leading to the picturesque farming community of Angochagua, nestled in a crook of the mountains. Following a stream, we visit the Andean home of Fernando Colimba, a native of the area, who built the classic adobe and thatched roof property as a house museum to preserve his local culture. Here he demonstrates age-old techniques for grinding corn and spinning wool and shows us old artifacts from the area's agricultural past. We return, riding up the shoulder of Mount Cunrro and through the community to see these old farming ways in action. Please tell your host in advance if you wish to do this ride so that we can arrange for the museum to be open. An English-speaking guide is advised but not absolutely necessary.

Estimated Time: 3-4 hours

Difficulty Level: Intermediate

Minimum Age Required: 6-8 years

Suggested Departure Time: 8:30/9 AM or 2 PM

Elevation: 2,964-3,100 m / 9,724-10,170 ft



Full Day Rides (available at added costs)

- The Condor, Community, and Waterfall Ride (5+ hours)
- Ride to Mount Cubilche (5+ hours)
- Lake View Ride (6-7 hours)
- La Chimba and Indigenous History Ride (6-7 hours)
- Angochagua and La Rinconada Cultural Ride (6-7 hours)
- Hacienda to Hacienda - Zuleta to Cusin (6-7 hours)
- Ventana Grande (6-7 hours)
- The Towers (6 hours)
- The Ventanas Loop (12 hours)
- Páramo Cusin (6-7 hours)





Non Riding Activities (included in program)

- Condor Rehabilitation Center and flying condor viewpoint (unique in Ecuador!); without guide.
- Extensive gardens and pond (with a host).
- Chapel (with a host).
- 60 km of self-guided trails (without guide).
- Visit to the community and to different sites of interest including embroidery stores, saddle factories, museums, etc. (without guide).
- 14th century Caranqui archeological pyramids (without guide).
- 1,700 hectares Hacienda grounds and farm operations: cheese museum, organic vegetable garden, worm farm, milking sheds, trout farm (with a host).
- Foundation's involvement: Community library and embroidery shop (with a host).



Other activities with added cost (please inquire for rates):

- Riding lessons (beginners)
- Special programs with children: horse care
- Rides in the horse drawn carriage
- Embroidery lessons
- Cooking lesson
- Guided bird and condor watching
- Private milking lessons
- Guided excursions
- Guided Tour of the colonial city of Ibarra and the Otavalo Indian Market.
- Bike rental
- Massages

Other Info

Meeting: Zuleta

Airport: Quito

Transfer: Quito

Distance: 2 hours by car, 110 km

Pick-up/ drop-off for this trip is from Mariscal Sucre International Airport (UIO) or any hotel in Quito. Transfer times are available any time on any day of the week.

Tack: The South American tack utilized is very similar to western. The saddle has a pommel and a deep seat.

Horses: Zuletenan breed; a mixture between Andalusian, Quarter horse, and Thoroughbred

Pace: Slow moderate with trots and canters according to riding level. 3 - 4 hours in the saddle
Walk | Trot | Canter |

Level: 🐾🐾🐾🐾🐾 (3 to 3.5 out of 5) Intermediate

Age: Min 6

Weight: 180 lbs / 80 kg

Riders: Min 2 riders

Max 10 riders
(per riding group)

Max Capacity 20

Rates and Dates 2026 - IT-ECSR03

Rates include: Accommodations, All meals, Spanish speaking guide, Riding days according to program (half day trails) & Taxes

Non Riding Activities (without guides): Condor Rehabilitation, hiking, 14th century Caranqui archeological pyramids & visit to local community (embroidery stores, saddle factories...) Helmets, half chaps, rain ponchos, and a saddle bag can be provided

Packages and Options

Season	Description	~US\$
A 2026	8 day trip - Standard Room (6 riding days)	\$3165
B 2026	8 day trip - Deluxe Room (6 riding days)	\$4135
C 2026	8 day trip - Junior Suite (6 riding days)	\$4720
D 2026	8 day trip - Suite (6 riding days)	\$5415
E 2026	5 day trip - Standard Room (3 riding days)	\$2230
F 2026	5 day trip - Deluxe Room (3 riding days)	\$2925
G 2026	5 day trip - Junior Suite (3 riding days)	\$3345
H 2026	5 day trip - Suite (3 riding days)	\$3840

Gratuity: 10 %

Transfer Option

Description

2026	Upgrade to full day ride (~5 hours riding) with packed lunch, per day, pp	\$70
2026	Holidays supplement, per night, per person	\$70
2026	English speaking guide additional cost -- please ask	
2026	Return transfer from Quito with guide (between 8pm to 6am), pp (based on 2 pax)	\$350
2026	Return transfer from Quito without guide (between 8pm to 6am), pp (based on 2 pax)	\$230
2026	Return transfer from Quito with guide (between 6am to 8pm), pp (based on 2 pax)	\$300
2026	Return transfer from Quito without guide (between 6am to 8pm), pp (based on 2 pax)	\$190
2026	Single supplement, add 30%	

Tour Dates

Season	Tour Dates		
A 2026	01/01/2026 - 12/31/2026	8d / 7n	8 day trip - Standard Room (6 riding days)
B 2026	01/01/2026 - 12/31/2026	8d / 7n	8 day trip - Deluxe Room (6 riding days)
C 2026	01/01/2026 - 12/31/2026	8d / 7n	8 day trip - Junior Suite (6 riding days)
D 2026	01/01/2026 - 12/31/2026	8d / 7n	8 day trip - Suite (6 riding days)
E 2026	01/01/2026 - 12/31/2026	8d / 7n	5 day trip - Standard Room (3 riding days)
F 2026	01/01/2026 - 12/31/2026	8d / 7n	5 day trip - Deluxe Room (3 riding days)
G 2026	01/01/2026 - 12/31/2026	8d / 7n	5 day trip - Junior Suite (3 riding days)
H 2026	01/01/2026 - 12/31/2026	8d / 7n	5 day trip - Suite (3 riding days)

Min/Max: 2/10

Arrival can be any day of the week.

Sold Out Dates (as of 3/27/23): June 23-25 and September 7-11

Rates do not include: Alcoholic beverages, Gratuities, Riding lessons and additional riding (full day trails) & English speaking guide

Non Riding Activities: Embroidery lessons, cooking lesson, guided bird and condor watching, private milking lessons, guided excursions, bike rentals & massages

Reservation Form

Hidden Trails Outdoor Reservation Form

Tour : _____ **Code #:** _____ **from:** _____ **to :** _____

The Travelers (Last Name, First Name)	Male Female	Single room/ or tent	Birth Date <small>MM/DD/YY</small>	Height	Weight*	<small>Special Diets**</small>	<small>Allergies</small>	<small>Medical Con.</small>	<small>Excellent</small>	<small>Good</small>	<small>Moderate</small>	<small>Poor</small>	<small>Fitness Level</small>	<small>need to rent equipm.</small>
1.		<input type="checkbox"/>	___/___/___			<input type="checkbox"/>	<input type="checkbox"/>	<input type="checkbox"/>	<input type="checkbox"/>	<input type="checkbox"/>	<input type="checkbox"/>	<input type="checkbox"/>	<input type="checkbox"/>	<input type="checkbox"/>
2.		<input type="checkbox"/>	___/___/___			<input type="checkbox"/>	<input type="checkbox"/>	<input type="checkbox"/>	<input type="checkbox"/>	<input type="checkbox"/>	<input type="checkbox"/>	<input type="checkbox"/>	<input type="checkbox"/>	<input type="checkbox"/>
3.		<input type="checkbox"/>	___/___/___			<input type="checkbox"/>	<input type="checkbox"/>	<input type="checkbox"/>	<input type="checkbox"/>	<input type="checkbox"/>	<input type="checkbox"/>	<input type="checkbox"/>	<input type="checkbox"/>	<input type="checkbox"/>
4.		<input type="checkbox"/>	___/___/___			<input type="checkbox"/>	<input type="checkbox"/>	<input type="checkbox"/>	<input type="checkbox"/>	<input type="checkbox"/>	<input type="checkbox"/>	<input type="checkbox"/>	<input type="checkbox"/>	<input type="checkbox"/>

* If more than 200 lbs we need to reconfirm with our partners first ** Details on dietary needs on separate sheet, please.

Special Diets: _____

How often do you exercise? _____ Describe your experience: _____

Have you been on other riding tours? No Yes last trip when? _____ Trip: _____

If Hidden Trails offers a transfer from the local airport/station: I would like the transfer to be included: YES NO

In an emergency, name and phone number of contact: _____

Attention: Please, if there is more than one participant, all have to sign the reservation form - make copies if needed

With my signature I confirm my reservation of the listed program(s) under the Hidden Trails Booking Conditions. I'm aware, and I made all participants aware of the risk involved with these outdoor adventure activities. All participants have read and agree with the Hidden Trails *Booking Conditions* and the Hidden Trails *Recreational Activity Release and Indemnity Agreement* in this brochure or as listed on the Internet.

I (we) will sign and forward the *Recreational Activity Release and Indemnity Agreement* at least 8 weeks before trip starting date.

Last Name and First Name (The Traveler) _____

Street _____ **e-mail** _____

City _____ **State** _____ **Postal/Zip Code** _____

Phone (wk) _____ **(hm)** _____ **Fax** _____

Date _____ **Signature (mandatory)** ^{1.}

Please, charge a 25% deposit (minimum \$ 350 per person) now and full payment 10 weeks before starting date to my credit card.

For payments by **VISA** or **Mastercard** (no debit cards)

Cardholder: _____

Card # _____ -3 digit Security # _____

Exp.Date: _____ Signature:

Billing Address for Credit Card (if different than mailing address):

I have enclosed a check for the deposit

Additional Signatures:

2. _____

3. _____

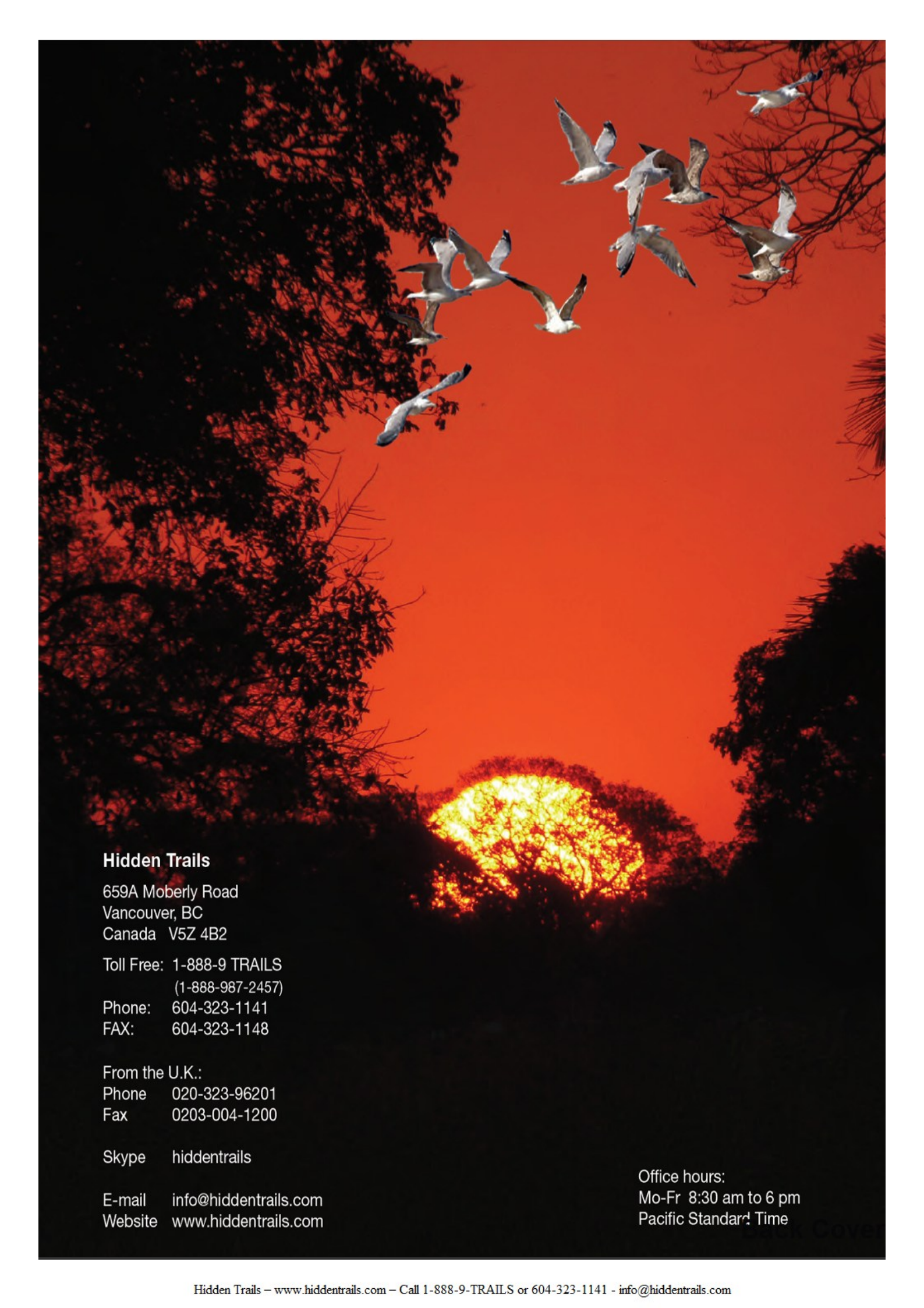
4. _____

Travel Cancellation Insurance Credit Card required

Sign me (us) up initial _____

No, we will provide our own initial _____

Hidden Trails Ltd. 659A Moberly Rd. Vancouver, BC V5Z 4B3 FAX: 604-323-1148 Phone: 604-323-1141



Hidden Trails

659A Moberly Road
Vancouver, BC
Canada V5Z 4B2

Toll Free: 1-888-9 TRAILS
(1-888-987-2457)

Phone: 604-323-1141
FAX: 604-323-1148

From the U.K.:

Phone 020-323-96201
Fax 0203-004-1200

Skype hiddentrails

E-mail info@hiddentrails.com
Website www.hiddentrails.com

Office hours:
Mo-Fr 8:30 am to 6 pm
Pacific Standard Time